

## Product datasheet for **TA347751**

### PSMD2 Rabbit Polyclonal Antibody

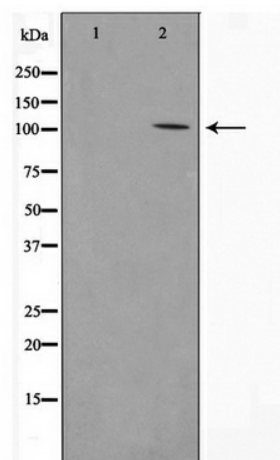
#### Product data:

Product Type:	Primary Antibodies
Applications:	WB
Recommended Dilution:	WB: 1:500-1:2000
Reactivity:	Human, Mouse, Rat
Host:	Rabbit
Isotype:	IgG
Clonality:	Polyclonal
Immunogen:	The immunogen for anti-PSMD2 Antibody: A synthesized peptide derived from human PSMD2
Formulation:	Rabbit IgG in phosphate buffered saline , pH 7.4, 150mM NaCl, 0.02% sodium azide and 50% glycerol. Store at -20?. Stable for 12 months from date of receipt
Concentration:	lot specific
Purification:	Immunogen affinity purified
Conjugation:	Unconjugated
Storage:	Store at -20°C as received.
Stability:	Stable for 12 months from date of receipt.
Predicted Protein Size:	100 kDa
Gene Name:	proteasome 26S subunit, non-ATPase 2
Database Link:	<a href="#">NP_002799</a> <a href="#">Entrez Gene 21762 Mouse</a> <a href="#">Entrez Gene 287984 Rat</a> <a href="#">Entrez Gene 5708 Human</a> <a href="#">Q13200</a>
Background:	PSMD2 acts as a regulatory subunit of the 26 proteasome which is involved in the ATP-dependent degradation of ubiquitinated proteins.
Synonyms:	P97; RPN1; S2; TRAP2
Note:	PSMD2 Antibody detects endogenous levels of PSMD2
Protein Families:	Druggable Genome
Protein Pathways:	Proteasome



[View online »](#)

## Product images:



Western blot analysis on COLO205 cell lysate using PSMD2 Antibody