

## Product datasheet for **TA347750**

### TTC23 Rabbit Polyclonal Antibody

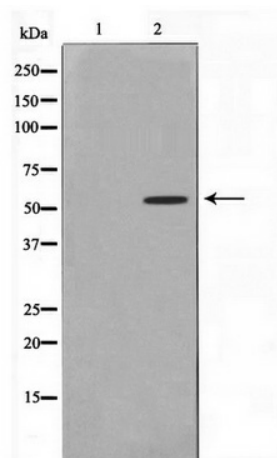
#### Product data:

Product Type:	Primary Antibodies
Applications:	WB
Recommended Dilution:	WB: 1:500-1:2000
Reactivity:	Human
Host:	Rabbit
Isotype:	IgG
Clonality:	Polyclonal
Immunogen:	The immunogen for anti-TTC23 Antibody: A synthesized peptide derived from human TTC23
Formulation:	Rabbit IgG in phosphate buffered saline , pH 7.4, 150mM NaCl, 0.02% sodium azide and 50% glycerol. Store at -20?. Stable for 12 months from date of receipt
Concentration:	lot specific
Purification:	Immunogen affinity purified
Conjugation:	Unconjugated
Storage:	Store at -20°C as received.
Stability:	Stable for 12 months from date of receipt.
Predicted Protein Size:	50 kDa
Gene Name:	tetratricopeptide repeat domain 23
Database Link:	<a href="#">NP_075056</a> <a href="#">Entrez Gene 64927 Human</a> <a href="#">Q5W5X9</a>
Background:	TTC23 3 isoforms of the human protein are produced by alternative splicing. Note: This description may include information from UniProtKB.
Synonyms:	HCC-8
Note:	TTC23 Antibody detects endogenous levels of TTC23



[View online »](#)

## Product images:



Western blot analysis on RAW264.7 cell lysate using TTC23 Antibody