

## Product datasheet for **TA347749**

### FOXL1 Rabbit Polyclonal Antibody

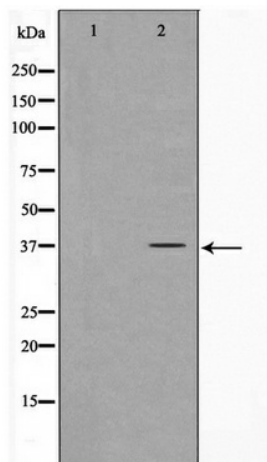
#### Product data:

Product Type:	Primary Antibodies
Applications:	WB
Recommended Dilution:	WB: 1:500-1:2000
Reactivity:	Human
Host:	Rabbit
Isotype:	IgG
Clonality:	Polyclonal
Immunogen:	The immunogen for anti-FOXL1 Antibody: A synthesized peptide derived from human FOXL1
Formulation:	Rabbit IgG in phosphate buffered saline , pH 7.4, 150mM NaCl, 0.02% sodium azide and 50% glycerol. Store at -20?. Stable for 12 months from date of receipt
Concentration:	lot specific
Purification:	Immunogen affinity purified
Conjugation:	Unconjugated
Storage:	Store at -20°C as received.
Stability:	Stable for 12 months from date of receipt.
Predicted Protein Size:	36 kDa
Gene Name:	forkhead box L1
Database Link:	<a href="#">NP_005241</a> <a href="#">Entrez Gene 2300 Human</a> <a href="#">Q12952</a>
Background:	FOXL1 Transcription factor required for proper proliferation and differentiation in the gastrointestinal epithelium. Target gene of the hedgehog (Hh) signaling pathway via GLI2 AND GLI3 transcription factors.
Synonyms:	FKH6; FKHL11; FREAC7
Note:	FOXL1 Antibody detects endogenous levels of FOXL1
Protein Families:	Transcription Factors



[View online »](#)

## Product images:



Western blot analysis on COS7 cell lysate using FOXL1 Antibody