

## Product datasheet for **TA347748**

### **SALF (STON1-GTF2A1L) Rabbit Polyclonal Antibody**

#### **Product data:**

Product Type:	Primary Antibodies
Applications:	WB
Recommended Dilution:	WB: 1:500-1:2000
Reactivity:	Human
Host:	Rabbit
Isotype:	IgG
Clonality:	Polyclonal
Immunogen:	The immunogen for anti-STON1 Antibody: A synthesized peptide derived from human STON1
Formulation:	Rabbit IgG in phosphate buffered saline , pH 7.4, 150mM NaCl, 0.02% sodium azide and 50% glycerol. Store at -20?. Stable for 12 months from date of receipt
Concentration:	lot specific
Purification:	Immunogen affinity purified
Conjugation:	Unconjugated
Storage:	Store at -20°C as received.
Stability:	Stable for 12 months from date of receipt.
Predicted Protein Size:	83 kDa
Gene Name:	STON1-GTF2A1L readthrough
Database Link:	<a href="#">NP_758515</a> <a href="#">Entrez Gene 286749 Human</a> <a href="#">Q9Y6Q2</a>



[View online »](#)

**Background:**

Endocytosis of cell surface proteins is mediated by a complex molecular machinery that assembles on the inner surface of the plasma membrane. This gene encodes one of two human homologs of the *Drosophila melanogaster* stoned B protein. This protein is related to components of the endocytic machinery and exhibits a modular structure consisting of an N-terminal proline-rich domain, a central region of homology specific to the human stoned B-like proteins, and a C-terminal region homologous to the mu subunits of adaptor protein (AP) complexes. Co-transcription of this gene and the neighboring downstream gene generates a rare transcript (SALF), which encodes a fusion protein comprised of sequence sharing identity with each individual gene product.

**Synonyms:**

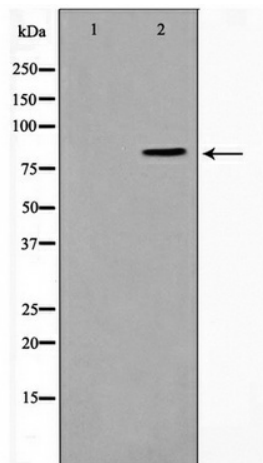
SALF

**Note:**

STON1 Antibody detects endogenous levels of STON1

**Protein Families:**

Transcription Factors

**Product images:**

Western blot analysis on K562 cell lysate using STON1 Antibody