

Product datasheet for **TA347747**

TPD52L2 Rabbit Polyclonal Antibody

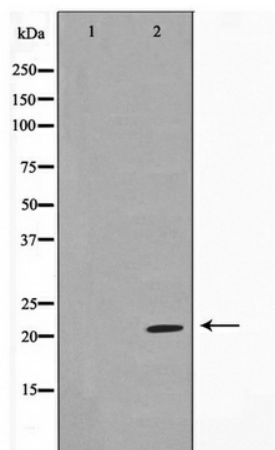
Product data:

Product Type:	Primary Antibodies
Applications:	WB
Recommended Dilution:	WB: 1:500-1:2000
Reactivity:	Human, Mouse, Rat
Host:	Rabbit
Isotype:	IgG
Clonality:	Polyclonal
Immunogen:	The immunogen for anti-TPD54 Antibody: A synthesized peptide derived from human TPD54
Formulation:	Rabbit IgG in phosphate buffered saline , pH 7.4, 150mM NaCl, 0.02% sodium azide and 50% glycerol. Store at -20?. Stable for 12 months from date of receipt
Concentration:	lot specific
Purification:	Immunogen affinity purified
Conjugation:	Unconjugated
Storage:	Store at -20°C as received.
Stability:	Stable for 12 months from date of receipt.
Predicted Protein Size:	22 kDa
Gene Name:	tumor protein D52 like 2
Database Link:	NP_003279 Entrez Gene 66314 MouseEntrez Gene 296480 RatEntrez Gene 7165 Human O43399
Background:	a cell cycle-regulated protein maximally expressed at the G2-M transition in breast cancer cells. Two alternatively spliced isoforms have been reported.
Synonyms:	D54
Note:	TPD54 Antibody detects endogenous levels of TPD54



[View online »](#)

Product images:



Western blot analysis on Jurkat cell lysate using
TPD54 Antibody