

Product datasheet for **TA347746**

Epsin 1 (EPN1) Rabbit Polyclonal Antibody

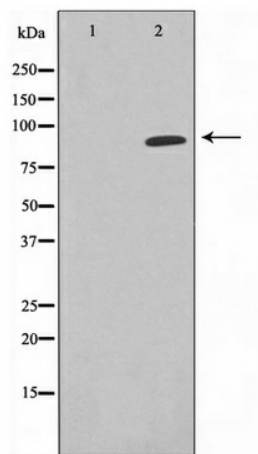
Product data:

Product Type:	Primary Antibodies
Applications:	WB
Recommended Dilution:	WB: 1:500-1:2000
Reactivity:	Human, Mouse, Rat
Host:	Rabbit
Isotype:	IgG
Clonality:	Polyclonal
Immunogen:	The immunogen for anti-EPN1 Antibody: A synthesized peptide derived from human EPN1
Formulation:	Rabbit IgG in phosphate buffered saline , pH 7.4, 150mM NaCl, 0.02% sodium azide and 50% glycerol. Store at -20?. Stable for 12 months from date of receipt
Concentration:	lot specific
Purification:	Immunogen affinity purified
Conjugation:	Unconjugated
Storage:	Store at -20°C as received.
Stability:	Stable for 12 months from date of receipt.
Predicted Protein Size:	85 kDa
Gene Name:	epsin 1
Database Link:	NP_037465 Entrez Gene 13854 MouseEntrez Gene 117277 RatEntrez Gene 29924 Human Q9Y6I3
Background:	EPN1 is an endocytic accessory protein that interacts with EPS15 (MIM 600051), the alpha subunit of the clathrin adaptor AP2 (AP2A1; MIM 601026), and clathrin (see MIM 118960), as well as with other accessory proteins for the endocytosis of clathrin-coated vesicles. [supplied by OMIM]
Synonyms:	EH domain-binding mitotic phosphoprotein; epsin 1
Note:	EPN1 Antibody detects endogenous levels of EPN1
Protein Pathways:	Endocytosis



[View online »](#)

Product images:



Western blot analysis on K562 cell lysate using EPN1 Antibody