

Product datasheet for **TA347745**

MUM1 (IRF4) Rabbit Polyclonal Antibody

Product data:

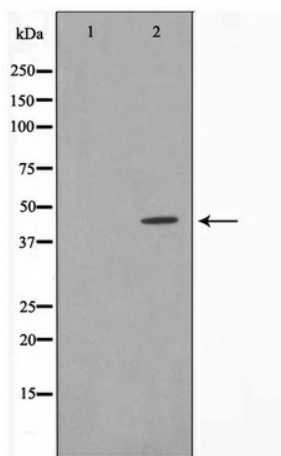
Product Type:	Primary Antibodies
Applications:	WB
Recommended Dilution:	WB: 1:500-1:2000
Reactivity:	Human, Mouse
Host:	Rabbit
Isotype:	IgG
Clonality:	Polyclonal
Immunogen:	The immunogen for anti-IRF4 Antibody: A synthesized peptide derived from human IRF4
Formulation:	Rabbit IgG in phosphate buffered saline , pH 7.4, 150mM NaCl, 0.02% sodium azide and 50% glycerol. Store at -20?. Stable for 12 months from date of receipt
Concentration:	lot specific
Purification:	Immunogen affinity purified
Conjugation:	Unconjugated
Storage:	Store at -20°C as received.
Stability:	Stable for 12 months from date of receipt.
Predicted Protein Size:	45 kDa
Gene Name:	interferon regulatory factor 4
Database Link:	NP_002451 Entrez Gene 16364 Mouse Entrez Gene 3662 Human Q15306
Background:	IRF3 encodes interferon regulatory factor 3, a member of the interferon regulatory transcription factor (IRF) family. IRF3 is found in an inactive cytoplasmic form that upon serine/threonine phosphorylation forms a complex with CREBBP. This complex translocates to the nucleus and activates the transcription of interferons alpha and beta, as well as other interferon-induced genes.
Synonyms:	LSIRF; MUM1; NF-EM5; SHEP8
Note:	IRF4 Antibody detects endogenous levels of IRF4



[View online »](#)

Protein Families: Druggable Genome, Transcription Factors

Product images:



Western blot analysis on HeLa cell lysate using IRF4 Antibody