

Product datasheet for **TA347744**

TAF6L Rabbit Polyclonal Antibody

Product data:

Product Type:	Primary Antibodies
Applications:	WB
Recommended Dilution:	WB: 1:500-1:2000
Reactivity:	Human, Mouse
Host:	Rabbit
Isotype:	IgG
Clonality:	Polyclonal
Immunogen:	The immunogen for anti-TAF6L Antibody: A synthesized peptide derived from human TAF6L
Formulation:	Rabbit IgG in phosphate buffered saline , pH 7.4, 150mM NaCl, 0.02% sodium azide and 50% glycerol. Store at -20?. Stable for 12 months from date of receipt
Concentration:	lot specific
Purification:	Immunogen affinity purified
Conjugation:	Unconjugated
Storage:	Store at -20°C as received.
Stability:	Stable for 12 months from date of receipt.
Predicted Protein Size:	68 kDa
Gene Name:	TATA-box binding protein associated factor 6 like
Database Link:	NP_006464 Entrez Gene 225895 Mouse Entrez Gene 10629 Human Q9Y6J9

Background: TAF6L Functions as a component of the PCAF complex. The PCAF complex is capable of efficiently acetylating histones in a nucleosomal context. The PCAF complex could be considered as the human version of the yeast SAGA complex. Belongs to the TAF6 family. The PCAF complex is composed of a number of TBP- associated factors (TAFs), such as TAF5, TAF5L, TAF6, TAF6L, TAF9, TAF10 and TAF12, PCAF, and also PCAF-associated factors (PAFs), such as TADA2L/ADA2, TADA3L/ADA3 and SPT3. Component of the STAGA transcription coactivator-HAT complex, at least composed of SUPT3H, GCN5L2, TAF5L, TAF6L, SUPT7L, TADA3L, TAD1L, TAF10, TAF12, TRRAP and TAF9.



[View online »](#)

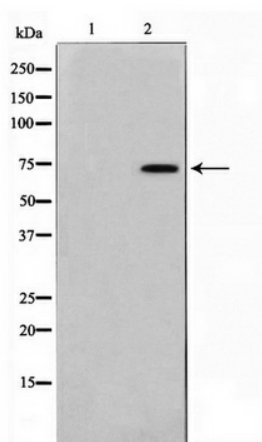
Synonyms: PAF65A

Note: TAF6L Antibody detects endogenous levels of TAF6L

Protein Families: Transcription Factors

Protein Pathways: Basal transcription factors

Product images:



Western blot analysis on 293 cell lysate using TAF6L Antibody