

Product datasheet for **TA347742**

KSR2 Rabbit Polyclonal Antibody

Product data:

Product Type:	Primary Antibodies
Applications:	WB
Recommended Dilution:	WB: 1:500-1:2000
Reactivity:	Human, Mouse
Host:	Rabbit
Isotype:	IgG
Clonality:	Polyclonal
Immunogen:	The immunogen for anti-KSR2 Antibody: A synthesized peptide derived from human KSR2
Formulation:	Rabbit IgG in phosphate buffered saline , pH 7.4, 150mM NaCl, 0.02% sodium azide and 50% glycerol. Store at -20?. Stable for 12 months from date of receipt
Concentration:	lot specific
Purification:	Immunogen affinity purified
Conjugation:	Unconjugated
Storage:	Store at -20°C as received.
Stability:	Stable for 12 months from date of receipt.
Predicted Protein Size:	108 kDa
Gene Name:	kinase suppressor of ras 2
Database Link:	NP_775869 Entrez Gene 333050 Mouse Entrez Gene 283455 Human Q6VAB6
Background:	KSR2 Location-regulated scaffold connecting MEK to RAF. Blocks MAP3K8 kinase activity and MAP3K8-mediated signaling. Acts as a negative regulator of MAP3K3-mediated activation of ERK, JNK and NF-kappa-B pathways, inhibiting MAP3K3-mediated interleukin-8 production. Belongs to the protein kinase superfamily. TKL Ser/Thr protein kinase family. Interacts with MAP2K1, MAP3K8, MAPK, RAS and RAF. 2 isoforms of the human protein are produced by alternative splicing.
Synonyms:	FLJ25965

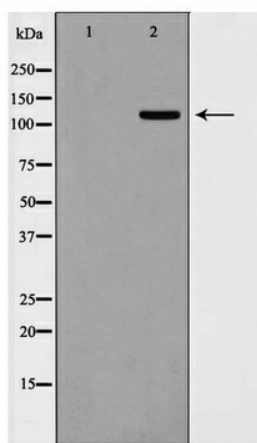


[View online »](#)

Note: KSR2 Antibody detects endogenous levels of KSR2

Protein Families: Druggable Genome, Protein Kinase

Product images:



Western blot analysis on 293 cell lysate using KSR2 Antibody