

## Product datasheet for **TA347741**

### CYP2U1 Rabbit Polyclonal Antibody

#### Product data:

|                         |   |
|-------------------------|---|
| Product Type:           | Primary Antibodies  |
| Applications:           | WB  |
| Recommended Dilution:   | WB: 1:500-1:2000  |
| Reactivity:             | Human, Mouse, Rat   |
| Host:                   | Rabbit  |
| Isotype:                | IgG   |
| Clonality:              | Polyclonal  |
| Immunogen:              | The immunogen for anti-Cytochrome P450 2U1 Antibody: A synthesized peptide derived from human Cytochrome P450 2U1   |
| Formulation:            | Rabbit IgG in phosphate buffered saline , pH 7.4, 150mM NaCl, 0.02% sodium azide and 50% glycerol. Store at -20?. Stable for 12 months from date of receipt   |
| Concentration:          | lot specific  |
| Purification:           | Immunogen affinity purified   |
| Conjugation:            | Unconjugated  |
| Storage:                | Store at -20°C as received.   |
| Stability:              | Stable for 12 months from date of receipt.  |
| Predicted Protein Size: | 61 kDa  |
| Gene Name:              | cytochrome P450 family 2 subfamily U member 1   |
| Database Link:          | <a href="#">NP_898898</a><br><a href="#">Entrez Gene 71519 Mouse</a> <a href="#">Entrez Gene 310848 Rat</a> <a href="#">Entrez Gene 113612 Human</a><br><a href="#">Q7Z449</a>  |
| Background:             | This gene encodes a member of the cytochrome P450 superfamily of enzymes. The cytochrome P450 proteins are monooxygenases which catalyze many reactions involved in drug metabolism and synthesis of cholesterol, steroids and other lipids. This enzyme is a hydroxylase that metabolizes arachidonic acid, docosahexaenoic acid, and other long chain fatty acids |
| Synonyms:               | P450TEC; SPG49; SPG56   |



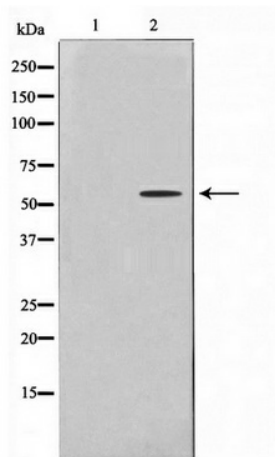
[View online »](#)

**Note:** Cytochrome P450 2U1 Antibody detects endogenous levels of Cytochrome P450 2U1

**Protein Families:** Druggable Genome, P450, Transmembrane

**Protein Pathways:** Arachidonic acid metabolism, Metabolic pathways

**Product images:**



Western blot analysis on HeLa cell lysate using  
Cytochrome P450 2U1 Antibody