

## Product datasheet for **TA347740**

### AAK1 Rabbit Polyclonal Antibody

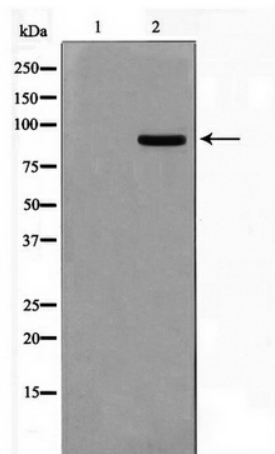
#### Product data:

Product Type:	Primary Antibodies
Applications:	WB
Recommended Dilution:	WB: 1:500-1:2000
Reactivity:	Human, Mouse, Rat
Host:	Rabbit
Isotype:	IgG
Clonality:	Polyclonal
Immunogen:	The immunogen for anti-AAK1 Antibody: A synthesized peptide derived from human AAK1
Formulation:	Rabbit IgG in phosphate buffered saline , pH 7.4, 150mM NaCl, 0.02% sodium azide and 50% glycerol. Store at -20?. Stable for 12 months from date of receipt
Concentration:	lot specific
Purification:	Immunogen affinity purified
Conjugation:	Unconjugated
Storage:	Store at -20°C as received.
Stability:	Stable for 12 months from date of receipt.
Predicted Protein Size:	94 kDa
Gene Name:	AP2 associated kinase 1
Database Link:	<a href="#">NP_055726</a> <a href="#">Entrez Gene 269774 MouseEntrez Gene 500244 RatEntrez Gene 22848 Human Q2M2I8</a>
Background:	AAK1 is an NAK kinase. Plays a regulatory role in clathrin-mediated endocytosis, including the regulation of fatty acid synthesis and cholesterol synthesis.
Synonyms:	RP11-427H3.3
Note:	AAK1 Antibody detects endogenous levels of AAK1
Protein Families:	Druggable Genome, Protein Kinase



[View online »](#)

## Product images:



Western blot analysis on COS7 cell lysate using AAK1 Antibody