

Product datasheet for **TA347736**

DOK7 Rabbit Polyclonal Antibody

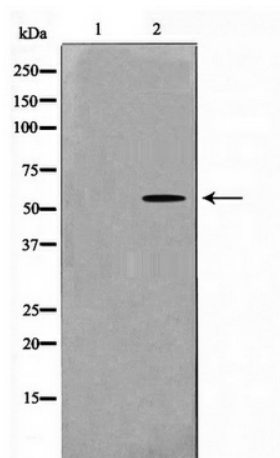
Product data:

Product Type:	Primary Antibodies
Applications:	WB
Recommended Dilution:	WB: 1:500-1:2000
Reactivity:	Human, Mouse
Host:	Rabbit
Isotype:	IgG
Clonality:	Polyclonal
Immunogen:	The immunogen for anti-DOK7 Antibody: A synthesized peptide derived from human DOK7
Formulation:	Rabbit IgG in phosphate buffered saline , pH 7.4, 150mM NaCl, 0.02% sodium azide and 50% glycerol. Store at -20?. Stable for 12 months from date of receipt
Concentration:	lot specific
Purification:	Immunogen affinity purified
Conjugation:	Unconjugated
Storage:	Store at -20°C as received.
Stability:	Stable for 12 months from date of receipt.
Predicted Protein Size:	60 kDa
Gene Name:	docking protein 7
Database Link:	NP_775931 Entrez Gene 231134 Mouse Entrez Gene 285489 Human Q18PE1
Background:	Dok7 docking proteins are enzymatically inert adaptor or scaffolding proteins. They provide a docking platform for the assembly of multimolecular signaling complexes. Probable muscle-intrinsic activator of MUSK that plays an essential role in neuromuscular synaptogenesis. Acts in a neural activation of MUSK and subsequent acetylcholine receptor (AChR) clustering in myotubes. Induces autophosphorylation of MUSK.
Synonyms:	C4orf25; CMS1B; CMS10
Note:	DOK7 Antibody detects endogenous levels of DOK7



[View online »](#)

Product images:



Western blot analysis on mouse brain cell lysate using DOK7 Antibody