

Product datasheet for **TA347733**

ERGIC3 Rabbit Polyclonal Antibody

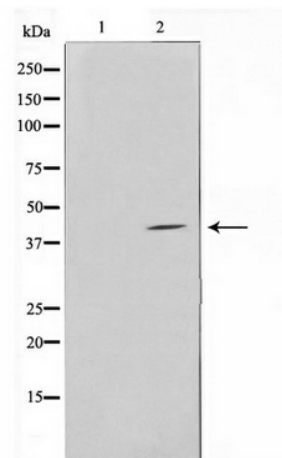
Product data:

Product Type:	Primary Antibodies
Applications:	WB
Recommended Dilution:	WB: 1:500-1:2000
Reactivity:	Human, Mouse
Host:	Rabbit
Isotype:	IgG
Clonality:	Polyclonal
Immunogen:	The immunogen for anti-ERGIC3 Antibody: A synthesized peptide derived from human ERGIC3
Formulation:	Rabbit IgG in phosphate buffered saline , pH 7.4, 150mM NaCl, 0.02% sodium azide and 50% glycerol. Store at -20?. Stable for 12 months from date of receipt
Concentration:	lot specific
Purification:	Immunogen affinity purified
Conjugation:	Unconjugated
Storage:	Store at -20°C as received.
Stability:	Stable for 12 months from date of receipt.
Predicted Protein Size:	43 kDa
Gene Name:	ERGIC and golgi 3
Database Link:	NP_057050 Entrez Gene 66366 Mouse Entrez Gene 51614 Human Q9Y282
Background:	SDBCAG84 Possible role in transport between endoplasmic reticulum and Golgi. Belongs to the ERGIC family. Interacts with ERGIC1/ERGIC32. 3 isoforms of the human protein are produced by alternative splicing.
Synonyms:	C20orf47; CGI-54; dj47704.2; Erv46; NY-BR-84; PRO0989; SDBCAG84
Note:	ERGIC3 Antibody detects endogenous levels of ERGIC3
Protein Families:	Transmembrane



[View online »](#)

Product images:



Western blot analysis on LOVO cell lysate using ERG13 Antibody