

## Product datasheet for **TA347732**

### CDKL4 Rabbit Polyclonal Antibody

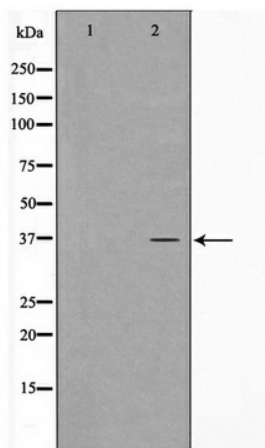
#### Product data:

Product Type:	Primary Antibodies
Applications:	WB
Recommended Dilution:	WB: 1:500-1:2000
Reactivity:	Human
Host:	Rabbit
Isotype:	IgG
Clonality:	Polyclonal
Immunogen:	The immunogen for anti-CDKL4 Antibody: A synthesized peptide derived from human CDKL4
Formulation:	Rabbit IgG in phosphate buffered saline , pH 7.4, 150mM NaCl, 0.02% sodium azide and 50% glycerol. Store at -20?. Stable for 12 months from date of receipt
Concentration:	lot specific
Purification:	Immunogen affinity purified
Conjugation:	Unconjugated
Storage:	Store at -20°C as received.
Stability:	Stable for 12 months from date of receipt.
Predicted Protein Size:	36 kDa
Gene Name:	cyclin dependent kinase like 4
Database Link:	<a href="#">NP_001009565</a> <a href="#">Entrez Gene 344387 Human</a> <a href="#">Q5MAI5</a>
Background:	CDKL4 Belongs to the protein kinase superfamily. CMGC Ser/Thr protein kinase family. CDC2/CDKX subfamily. Note: This description may include information from UniProtKB.
Synonyms:	cyclin-dependent kinase-like 4; OTTHUMP00000164944
Note:	CDKL4 Antibody detects endogenous levels of CDKL4
Protein Families:	Druggable Genome, Protein Kinase



[View online »](#)

## Product images:



Western blot analysis on HepG2 cell lysate using CDKL4 Antibody