

## Product datasheet for **TA347731**

### EP300 Rabbit Polyclonal Antibody

#### Product data:

Product Type:	Primary Antibodies
Applications:	WB
Recommended Dilution:	WB: 1:500-1:2000
Reactivity:	Human
Host:	Rabbit
Isotype:	IgG
Clonality:	Polyclonal
Immunogen:	The immunogen for anti-p300 Antibody: A synthesized peptide derived from human p300
Formulation:	Rabbit IgG in phosphate buffered saline , pH 7.4, 150mM NaCl, 0.02% sodium azide and 50% glycerol. Store at -20?. Stable for 12 months from date of receipt
Concentration:	lot specific
Purification:	Immunogen affinity purified
Conjugation:	Unconjugated
Storage:	Store at -20°C as received.
Stability:	Stable for 12 months from date of receipt.
Predicted Protein Size:	264 kDa
Gene Name:	E1A binding protein p300
Database Link:	<a href="#">NP_001420</a> <a href="#">Entrez Gene 2033 Human</a> <a href="#">Q09472</a>



[View online »](#)

**Background:** p300 is a histone acetyltransferase and transcriptional co-activator that regulates transcription via chromatin remodeling. Acetylates all four core histones in nucleosomes. Related to CPB (CREB-binding protein), and like CPB can stimulate transcription through activation of CREB. Specifically inhibited by the adenovirus oncoprotein E1A. A co-activator of HIF1A (hypoxia-inducible factor 1 alpha), and thus plays a role in the stimulation of hypoxia-induced genes such as VEGF. Mediates cAMP-gene regulation by binding specifically to phosphorylated CREB protein. Methylated at R580 and R604 in the KIX domain by CARM1, which blocks association with CREB, inhibits CREB signaling and activates the apoptotic response. Also methylated at R2142 by CARM1, which impairs interaction with NCoA2.

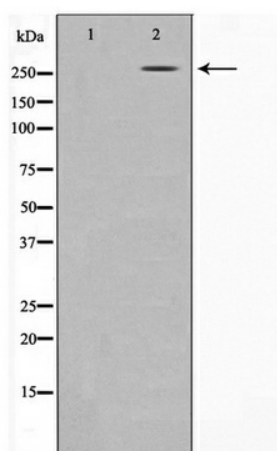
**Synonyms:** KAT3B; p300; RSTS2

**Note:** p300 Antibody detects endogenous levels of p300

**Protein Families:** Druggable Genome, Transcription Factors

**Protein Pathways:** Adherens junction, Cell cycle, Huntington's disease, Jak-STAT signaling pathway, Long-term potentiation, Melanogenesis, Notch signaling pathway, Pathways in cancer, Prostate cancer, Renal cell carcinoma, TGF-beta signaling pathway, Wnt signaling pathway

### Product images:



Western blot analysis on 293 cell lysate using p300 Antibody