

## Product datasheet for **TA347730**

### ELOVL1 Rabbit Polyclonal Antibody

#### Product data:

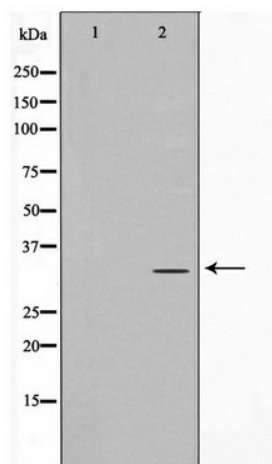
Product Type:	Primary Antibodies
Applications:	WB
Recommended Dilution:	WB: 1:500-1:2000
Reactivity:	Human, Mouse
Host:	Rabbit
Isotype:	IgG
Clonality:	Polyclonal
Immunogen:	The immunogen for anti-ELOVL1 Antibody: A synthesized peptide derived from human ELOVL1
Formulation:	Rabbit IgG in phosphate buffered saline , pH 7.4, 150mM NaCl, 0.02% sodium azide and 50% glycerol. Store at -20?. Stable for 12 months from date of receipt
Concentration:	lot specific
Purification:	Immunogen affinity purified
Conjugation:	Unconjugated
Storage:	Store at -20°C as received.
Stability:	Stable for 12 months from date of receipt.
Predicted Protein Size:	35 kDa
Gene Name:	ELOVL fatty acid elongase 1
Database Link:	<a href="#">NP_073732</a> <a href="#">Entrez Gene 54325 Mouse</a> <a href="#">Entrez Gene 64834 Human</a> <a href="#">Q9BW60</a>
Background:	ELOVL1 Could be implicated in tissue-specific synthesis of very long chain fatty acids and sphingolipids. May catalyze one or both of the reduction reaction in fatty acid elongation, i.e., conversion of beta-ketoacyl CoA to beta-hydroxyacyl CoA or reduction of trans-2-enoyl CoA to the saturated acyl CoA derivative. Belongs to the ELO family
Synonyms:	CGI-88; Ssc1
Note:	ELOVL1 Antibody detects endogenous levels of ELOVL1



[View online »](#)

Protein Families: Transmembrane

**Product images:**



Western blot analysis on Jurkat cell lysate using ELOVL1 Antibody