

## Product datasheet for **TA347728**

### GPRIN1 Rabbit Polyclonal Antibody

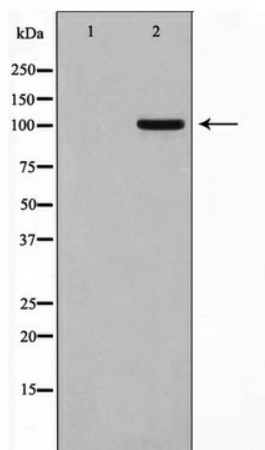
#### Product data:

Product Type:	Primary Antibodies
Applications:	WB
Recommended Dilution:	WB: 1:500-1:2000
Reactivity:	Human
Host:	Rabbit
Isotype:	IgG
Clonality:	Polyclonal
Immunogen:	The immunogen for anti-GPRIN1 Antibody: A synthesized peptide derived from human GPRIN1
Formulation:	Rabbit IgG in phosphate buffered saline , pH 7.4, 150mM NaCl, 0.02% sodium azide and 50% glycerol. Store at -20?. Stable for 12 months from date of receipt
Concentration:	lot specific
Purification:	Immunogen affinity purified
Conjugation:	Unconjugated
Storage:	Store at -20°C as received.
Stability:	Stable for 12 months from date of receipt.
Predicted Protein Size:	102 kDa
Gene Name:	G protein regulated inducer of neurite outgrowth 1
Database Link:	<a href="#">NP_443131</a> <a href="#">Entrez Gene 114787 Human</a> <a href="#">Q7Z2K8</a>
Background:	GRIN1 May be involved in neurite outgrowth. Interacts with activated forms of GNAI1, GNAO1 and GNAZ. 2 isoforms of the human protein are produced by alternative splicing. Note: This description may include information from UniProtKB.
Synonyms:	GRIN1
Note:	GPRIN1 Antibody detects endogenous levels of GPRIN1



[View online »](#)

## Product images:



Western blot analysis on HT29 cell lysate using GPRIN1 Antibody