

## Product datasheet for **TA347725**

### **TBX22 Rabbit Polyclonal Antibody**

#### **Product data:**

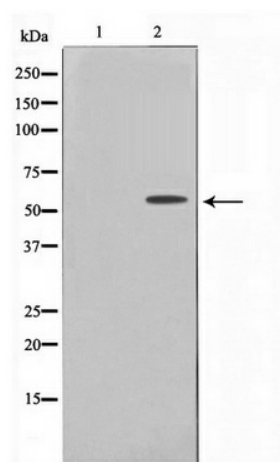
Product Type:	Primary Antibodies
Applications:	WB
Recommended Dilution:	WB: 1:500-1:2000
Reactivity:	Human
Host:	Rabbit
Isotype:	IgG
Clonality:	Polyclonal
Immunogen:	The immunogen for anti-TBX22 Antibody: A synthesized peptide derived from human TBX22
Formulation:	Rabbit IgG in phosphate buffered saline , pH 7.4, 150mM NaCl, 0.02% sodium azide and 50% glycerol. Store at -20?. Stable for 12 months from date of receipt
Concentration:	lot specific
Purification:	Immunogen affinity purified
Conjugation:	Unconjugated
Storage:	Store at -20°C as received.
Stability:	Stable for 12 months from date of receipt.
Predicted Protein Size:	58 kDa
Gene Name:	T-box 22
Database Link:	<a href="#">NP_058650</a> <a href="#">Entrez Gene 50945 Human</a> <a href="#">Q9Y458</a>
Background:	This gene is a member of a phylogenetically conserved family of genes that share a common DNA-binding domain, the T-box. T-box genes encode transcription factors involved in the regulation of developmental processes. Mutations in this gene have been associated with the inherited X-linked disorder, Cleft palate with ankyloglossia, and it is believed to play a major role in human palatogenesis.
Synonyms:	ABERS; CLPA; CPX; dj795G23.1; TBXX
Note:	TBX22 Antibody detects endogenous levels of TBX22



[View online »](#)

Protein Families: Transcription Factors

## Product images:



Western blot analysis on Jurkat cell lysate using TBX22 Antibody