

## Product datasheet for **TA347724**

### **RNF144 (RNF144A) Rabbit Polyclonal Antibody**

#### **Product data:**

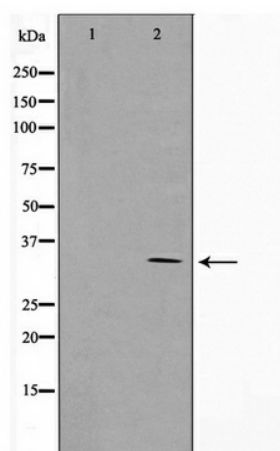
<b>Product Type:</b>	Primary Antibodies
<b>Applications:</b>	WB
<b>Recommended Dilution:</b>	WB: 1:500-1:2000
<b>Reactivity:</b>	Human, Mouse
<b>Host:</b>	Rabbit
<b>Isotype:</b>	IgG
<b>Clonality:</b>	Polyclonal
<b>Immunogen:</b>	The immunogen for anti-RNF144A Antibody: A synthesized peptide derived from human RNF144A
<b>Formulation:</b>	Rabbit IgG in phosphate buffered saline , pH 7.4, 150mM NaCl, 0.02% sodium azide and 50% glycerol. Store at -20?. Stable for 12 months from date of receipt
<b>Concentration:</b>	lot specific
<b>Purification:</b>	Immunogen affinity purified
<b>Conjugation:</b>	Unconjugated
<b>Storage:</b>	Store at -20°C as received.
<b>Stability:</b>	Stable for 12 months from date of receipt.
<b>Predicted Protein Size:</b>	30 kDa
<b>Gene Name:</b>	ring finger protein 144A
<b>Database Link:</b>	<a href="#">NP_055561</a> <a href="#">Entrez Gene 108089 Mouse</a> <a href="#">Entrez Gene 9781 Human</a> <a href="#">P50876</a>
<b>Background:</b>	RNF144A E3 ubiquitin-protein ligase which accepts ubiquitin from E2 ubiquitin-conjugating enzymes UBE2L3 and UBE2L6 in the form of a thioester and then directly transfers the ubiquitin to targeted substrates. Belongs to the RBR family. RNF144 subfamily. Interacts with UBE2L3.
<b>Synonyms:</b>	RNF144; UBCE7IP4
<b>Note:</b>	RNF144A Antibody detects endogenous levels of RNF144A



[View online »](#)

Protein Families: Druggable Genome, Transmembrane

### Product images:



Western blot analysis on COLO205 cell lysate using RNF144A Antibody