

Product datasheet for **TA347723**

RBM26 Rabbit Polyclonal Antibody

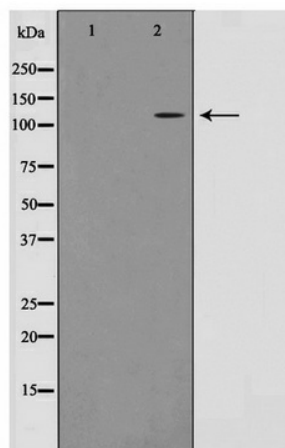
Product data:

Product Type:	Primary Antibodies
Applications:	WB
Recommended Dilution:	WB: 1:500-1:2000
Reactivity:	Human, Mouse
Host:	Rabbit
Isotype:	IgG
Clonality:	Polyclonal
Immunogen:	The immunogen for anti-RBM26 Antibody: A synthesized peptide derived from human RBM26
Formulation:	Rabbit IgG in phosphate buffered saline , pH 7.4, 150mM NaCl, 0.02% sodium azide and 50% glycerol. Store at -20?. Stable for 12 months from date of receipt
Concentration:	lot specific
Purification:	Immunogen affinity purified
Conjugation:	Unconjugated
Storage:	Store at -20°C as received.
Stability:	Stable for 12 months from date of receipt.
Predicted Protein Size:	113 kDa
Gene Name:	RNA binding motif protein 26
Database Link:	NP_071401 Entrez Gene 74213 Mouse Entrez Gene 64062 Human Q5T8P6
Background:	RBM26 6 isoforms of the human protein are produced by alternative splicing. Note: This description may include information from UniProtKB.
Synonyms:	ARRS2; C13orf10; PPP1R132; PRO1777; SE70-2; ZC3H17
Note:	RBM26 Antibody detects endogenous levels of RBM26



[View online »](#)

Product images:



Western blot analysis on Jurkat cell lysate using RBM26 Antibody