

## Product datasheet for **TA347721**

### STEAP3 Rabbit Polyclonal Antibody

#### Product data:

Product Type:	Primary Antibodies
Applications:	WB
Recommended Dilution:	WB: 1:500-1:2000
Reactivity:	Human, Mouse, Rat
Host:	Rabbit
Isotype:	IgG
Clonality:	Polyclonal
Immunogen:	The immunogen for anti-STEAP3 Antibody: A synthesized peptide derived from human STEAP3
Formulation:	Rabbit IgG in phosphate buffered saline , pH 7.4, 150mM NaCl, 0.02% sodium azide and 50% glycerol. Store at -20?. Stable for 12 months from date of receipt
Concentration:	lot specific
Purification:	Immunogen affinity purified
Conjugation:	Unconjugated
Storage:	Store at -20°C as received.
Stability:	Stable for 12 months from date of receipt.
Predicted Protein Size:	54 kDa
Gene Name:	STEAP3 metalloreductase
Database Link:	<a href="#">NP_878919</a> <a href="#">Entrez Gene 68428 Mouse</a> <a href="#">Entrez Gene 170824 Rat</a> <a href="#">Entrez Gene 55240 Human</a> <a href="#">Q658P3</a>

**Background:** STEAP3 a multi-pass membrane protein induced directly by p53. Plays an important role in facilitating exosome secretion. Enhances secretion in the DNA damage-induced p53-dependent exosomal secretory pathway. Localizes to vesicular-like structures at the plasma membrane and around the nucleus. Highly expressed in hematopoietic tissues where it localizes to the specialized endosome. An endosomal ferrireductase required for efficient transferrin-dependent iron uptake in erythroid cells. Participates in erythroid iron homeostasis by reducing Fe(3+) to Fe(2+). Can also reduce of Cu(2+) to Cu(1+), suggesting that it participates in copper homeostasis. Uses NAD(+) as acceptor.



[View online »](#)

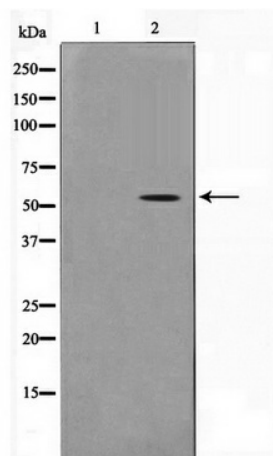
**Synonyms:** AHMIO2; dudlin-2; dudulin-2; pHyde; STMP3; TSAP6

**Note:** STEA3 Antibody detects endogenous levels of STEA3

**Protein Families:** Transmembrane

**Protein Pathways:** p53 signaling pathway

**Product images:**



Western blot analysis on COLO205 cell lysate using STEA3 Antibody