

Product datasheet for **TA347720**

AKAP2 Rabbit Polyclonal Antibody

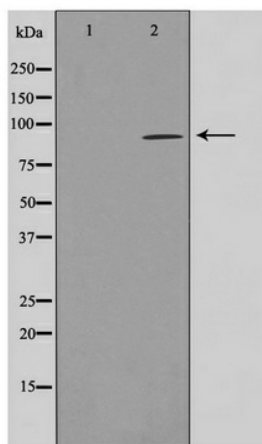
Product data:

Product Type:	Primary Antibodies
Applications:	WB
Recommended Dilution:	WB: 1:500-1:2000
Reactivity:	Human
Host:	Rabbit
Isotype:	IgG
Clonality:	Polyclonal
Immunogen:	The immunogen for anti-AKAP2 Antibody: A synthesized peptide derived from human AKAP2
Formulation:	Rabbit IgG in phosphate buffered saline , pH 7.4, 150mM NaCl, 0.02% sodium azide and 50% glycerol. Store at -20?. Stable for 12 months from date of receipt
Concentration:	lot specific
Purification:	Immunogen affinity purified
Conjugation:	Unconjugated
Storage:	Store at -20°C as received.
Stability:	Stable for 12 months from date of receipt.
Predicted Protein Size:	96 kDa
Gene Name:	A-kinase anchoring protein 2
Database Link:	NP_001004065 Entrez Gene 445815 Human Entrez Gene 11217 Human
Background:	AKAP2 Binds to regulatory subunit (RII) of protein kinase A. May be involved in establishing polarity in signaling systems or in integrating PKA-RII isoforms with downstream effectors to capture, amplify and focus diffuse, trans-cellular signals carried by cAMP. 5 isoforms of the human protein are produced by alternative splicing.
Synonyms:	AKAP-2; AKAPKL; MISP2; PRKA2
Note:	AKAP2 Antibody detects endogenous levels of AKAP2



[View online »](#)

Product images:



Western blot analysis on LOVO cell lysate using
AKAP2 Antibody