

## Product datasheet for **TA347717**

### CERKL Rabbit Polyclonal Antibody

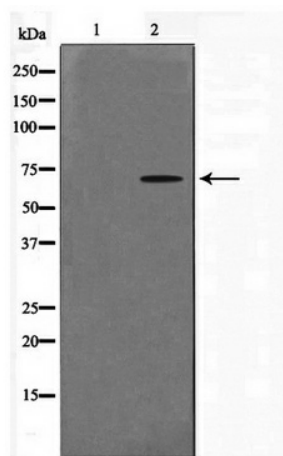
#### Product data:

Product Type:	Primary Antibodies
Applications:	WB
Recommended Dilution:	WB: 1:500-1:2000
Reactivity:	Human
Host:	Rabbit
Isotype:	IgG
Clonality:	Polyclonal
Immunogen:	The immunogen for anti-CERKL Antibody: A synthesized peptide derived from human CERKL
Formulation:	Rabbit IgG in phosphate buffered saline , pH 7.4, 150mM NaCl, 0.02% sodium azide and 50% glycerol. Store at -20?. Stable for 12 months from date of receipt
Concentration:	lot specific
Purification:	Immunogen affinity purified
Conjugation:	Unconjugated
Storage:	Store at -20°C as received.
Stability:	Stable for 12 months from date of receipt.
Predicted Protein Size:	63 kDa
Gene Name:	ceramide kinase like
Database Link:	<a href="#">NP_001025482</a> <a href="#">Entrez Gene 375298 Human</a> <a href="#">Q49MI3</a>
Background:	Ceramide kinases convert the sphingolipid metabolite ceramide into ceramide-1-phosphate, both key mediators of cellular apoptosis and survival. Ceramide metabolism plays an essential role in the viability of neuronal cells, the membranes of which are particularly rich in sphingolipids (Tuson et al., 2004). [supplied by OMIM]
Synonyms:	RP26
Note:	CERKL Antibody detects endogenous levels of CERKL
Protein Families:	Druggable Genome



[View online »](#)

## Product images:



Western blot analysis on A549 cell lysate using CERKL Antibody