

Product datasheet for **TA347716**

IF3EI (EIF3L) Rabbit Polyclonal Antibody

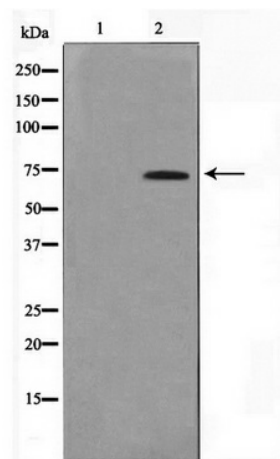
Product data:

Product Type:	Primary Antibodies
Applications:	WB
Recommended Dilution:	WB: 1:500-1:2000
Reactivity:	Human, Mouse
Host:	Rabbit
Isotype:	IgG
Clonality:	Polyclonal
Immunogen:	The immunogen for anti-IF3EI Antibody: A synthesized peptide derived from human IF3EI
Formulation:	Rabbit IgG in phosphate buffered saline , pH 7.4, 150mM NaCl, 0.02% sodium azide and 50% glycerol. Store at -20?. Stable for 12 months from date of receipt
Concentration:	lot specific
Purification:	Immunogen affinity purified
Conjugation:	Unconjugated
Storage:	Store at -20°C as received.
Stability:	Stable for 12 months from date of receipt.
Predicted Protein Size:	67 kDa
Gene Name:	eukaryotic translation initiation factor 3 subunit L
Database Link:	NP_001229852 Entrez Gene 223691 Mouse Entrez Gene 51386 Human Q9Y262
Background:	eIF3S6IP Component of the eukaryotic translation initiation factor 3 (eIF-3) complex, which is required for several steps in the initiation of protein synthesis. The eIF-3 complex associates with the 40S ribosome and facilitates the recruitment of eIF-1, eIF-1A, eIF-2:GTP:methionyl-tRNAi and eIF-5 to form the 43S preinitiation complex (43S PIC). The eIF-3 complex stimulates mRNA recruitment to the 43S PIC and scanning of the mRNA for AUG recognition.
Synonyms:	EIF3EIP; EIF3S6IP; EIF3S11; HSPC021; HSPC025; MSTP005
Note:	IF3EI Antibody detects endogenous levels of IF3EI



[View online »](#)

Product images:



Western blot analysis on HuvEc cell lysate using IF3EI Antibody