

Product datasheet for **TA347715**

Nrf2 (NFE2L2) Rabbit Polyclonal Antibody

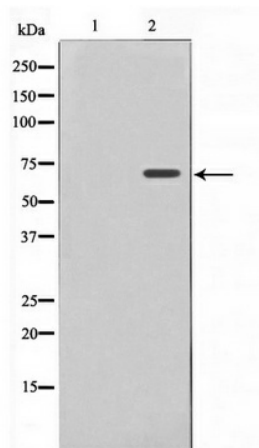
Product data:

Product Type:	Primary Antibodies
Applications:	WB
Recommended Dilution:	WB: 1:500-1:2000
Reactivity:	Human, Mouse, Rat
Host:	Rabbit
Isotype:	IgG
Clonality:	Polyclonal
Immunogen:	The immunogen for anti-Nrf2 Antibody: A synthesized peptide derived from human Nrf2
Formulation:	Rabbit IgG in phosphate buffered saline , pH 7.4, 150mM NaCl, 0.02% sodium azide and 50% glycerol. Store at -20?. Stable for 12 months from date of receipt
Concentration:	lot specific
Purification:	Immunogen affinity purified
Conjugation:	Unconjugated
Storage:	Store at -20°C as received.
Stability:	Stable for 12 months from date of receipt.
Predicted Protein Size:	68 kDa
Gene Name:	nuclear factor, erythroid 2 like 2
Database Link:	NP_001138884 Entrez Gene 18024 MouseEntrez Gene 83619 RatEntrez Gene 4780 Human Q16236
Background:	GABPA Transcription factor capable of interacting with purine rich repeats (GA repeats). Necessary for the expression of the Adenovirus E4 gene. Belongs to the ETS family. Heterotetramer of two alpha and two beta subunits.
Synonyms:	NRF2
Note:	Nrf2 Antibody detects endogenous levels of Nrf2
Protein Families:	Transcription Factors



[View online »](#)

Product images:



Western blot analysis on HuvEc cell lysate using Nrf2 Antibody