

Product datasheet for **TA347709**

FASTKD1 Rabbit Polyclonal Antibody

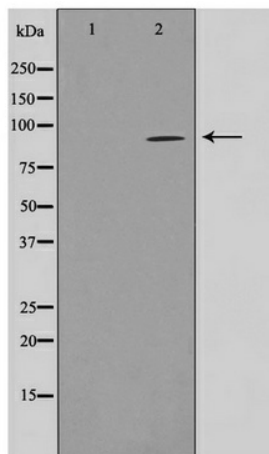
Product data:

Product Type:	Primary Antibodies
Applications:	WB
Recommended Dilution:	WB: 1:500-1:2000
Reactivity:	Human, Mouse
Host:	Rabbit
Isotype:	IgG
Clonality:	Polyclonal
Immunogen:	The immunogen for anti-FAKD1 Antibody: A synthesized peptide derived from human FAKD1
Formulation:	Rabbit IgG in phosphate buffered saline , pH 7.4, 150mM NaCl, 0.02% sodium azide and 50% glycerol. Store at -20?. Stable for 12 months from date of receipt
Concentration:	lot specific
Purification:	Immunogen affinity purified
Conjugation:	Unconjugated
Storage:	Store at -20°C as received.
Stability:	Stable for 12 months from date of receipt.
Predicted Protein Size:	97 kDa
Gene Name:	FAST kinase domains 1
Database Link:	NP_001268405 Entrez Gene 320720 Mouse Entrez Gene 79675 Human Q53R41
Background:	FASTKD1 Belongs to the FAST kinase family. 2 isoforms of the human protein are produced by alternative splicing. Note: This description may include information from UniProtKB.
Synonyms:	FLJ21901; KIAA1800; OTTHUMP00000207008
Note:	FAKD1 Antibody detects endogenous levels of FAKD1



[View online »](#)

Product images:



Western blot analysis on COS7 cell lysate using
FASTKD1 Antibody