

Product datasheet for **TA347706**

Spindly (SPDL1) Rabbit Polyclonal Antibody

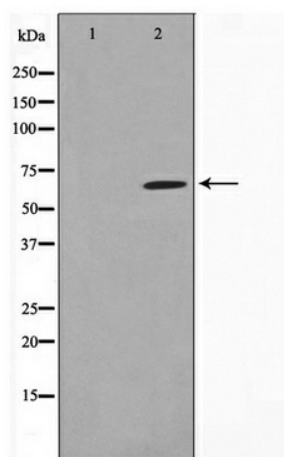
Product data:

Product Type:	Primary Antibodies
Applications:	WB
Recommended Dilution:	WB: 1:500-1:2000
Reactivity:	Human
Host:	Rabbit
Isotype:	IgG
Clonality:	Polyclonal
Immunogen:	The immunogen for anti-CCDC99 Antibody: A synthesized peptide derived from human CCDC99
Formulation:	Rabbit IgG in phosphate buffered saline , pH 7.4, 150mM NaCl, 0.02% sodium azide and 50% glycerol. Store at -20?. Stable for 12 months from date of receipt
Concentration:	lot specific
Purification:	Immunogen affinity purified
Conjugation:	Unconjugated
Storage:	Store at -20°C as received.
Stability:	Stable for 12 months from date of receipt.
Predicted Protein Size:	70 kDa
Gene Name:	spindle apparatus coiled-coil protein 1
Database Link:	NP_060255 Entrez Gene 54908 Human Q96EA4
Background:	CCDC99 Required for the localization of dynein and dynactin to the mitotic kintochore. Dynein is believed to control the initial lateral interaction between the kinetochore and spindle microtubules and to facilitate the subsequent formation of end-on kinetochore-microtubule attachments mediated by the NDC80 complex. Also required for correct spindle orientation. Does not appear to be required for the removal of spindle assembly checkpoint (SAC) proteins from the kinetochore upon bipolar spindle attachment.
Synonyms:	CCDC99


[View online »](#)

Note: CCDC99 Antibody detects endogenous levels of CCDC99

Product images:



Western blot analysis on NIH-3T3 cell lysate using CCDC99 Antibody