

Product datasheet for **TA347703**

CD69 Rabbit Polyclonal Antibody

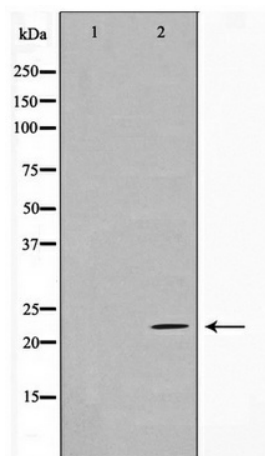
Product data:

Product Type:	Primary Antibodies
Applications:	WB
Recommended Dilution:	WB: 1:500-1:2000
Reactivity:	Human, Mouse, Rat
Host:	Rabbit
Isotype:	IgG
Clonality:	Polyclonal
Immunogen:	The immunogen for anti-CD69 Antibody: A synthesized peptide derived from human CD69
Formulation:	Rabbit IgG in phosphate buffered saline , pH 7.4, 150mM NaCl, 0.02% sodium azide and 50% glycerol. Store at -20?. Stable for 12 months from date of receipt
Concentration:	lot specific
Purification:	Immunogen affinity purified
Conjugation:	Unconjugated
Storage:	Store at -20°C as received.
Stability:	Stable for 12 months from date of receipt.
Predicted Protein Size:	23 kDa
Gene Name:	CD69 molecule
Database Link:	NP_001772 Entrez Gene 12515 MouseEntrez Gene 29187 RatEntrez Gene 969 Human Q07108
Background:	CD69 Involved in lymphocyte proliferation and functions as a signal transmitting receptor in lymphocytes, natural killer (NK) cells, and platelets. Induced by antigens, mitogens or activators of PKC on the surface of T and B-lymphocytes. By interaction of IL-2 with the p75 IL-2R on the surface of NK cells.
Synonyms:	28; AIM; BL-AC; CLEC2C; EA1; GP32; MLR-3; P26
Note:	CD69 Antibody detects endogenous levels of CD69
Protein Families:	Druggable Genome, ES Cell Differentiation/IPS, Transmembrane



[View online »](#)

Product images:



Western blot analysis on HuvEc cell lysate using CD69 Antibody