

## Product datasheet for **TA347701**

### **p18 INK4c (CDKN2C) Rabbit Polyclonal Antibody**

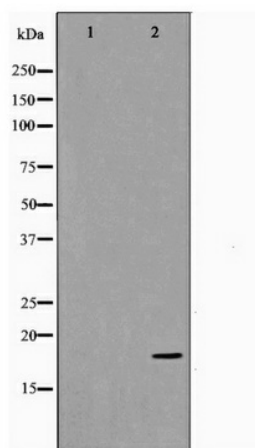
#### **Product data:**

|                                |   |
|--------------------------------|---|
| <b>Product Type:</b>           | Primary Antibodies  |
| <b>Applications:</b>           | WB  |
| <b>Recommended Dilution:</b>   | WB: 1:500-1:2000  |
| <b>Reactivity:</b>             | Human, Mouse  |
| <b>Host:</b>                   | Rabbit  |
| <b>Isotype:</b>                | IgG   |
| <b>Clonality:</b>              | Polyclonal  |
| <b>Immunogen:</b>              | The immunogen for anti-p18 INK Antibody: A synthesized peptide derived from human p18 INK   |
| <b>Formulation:</b>            | Rabbit IgG in phosphate buffered saline , pH 7.4, 150mM NaCl, 0.02% sodium azide and 50% glycerol. Store at -20?. Stable for 12 months from date of receipt         |
| <b>Concentration:</b>          | lot specific  |
| <b>Purification:</b>           | Immunogen affinity purified   |
| <b>Conjugation:</b>            | Unconjugated  |
| <b>Storage:</b>                | Store at -20°C as received.   |
| <b>Stability:</b>              | Stable for 12 months from date of receipt.  |
| <b>Predicted Protein Size:</b> | 18 kDa  |
| <b>Gene Name:</b>              | cyclin-dependent kinase inhibitor 2C  |
| <b>Database Link:</b>          | <a href="#">NP_523240</a><br><a href="#">Entrez Gene 12580 Mouse</a> <a href="#">Entrez Gene 1031 Human</a><br><a href="#">P42773</a>                               |
| <b>Background:</b>             | CDKN2C Interacts strongly with CDK6, weakly with CDK4. Inhibits cell growth and proliferation with a correlated dependence on endogenous retinoblastoma protein RB. |
| <b>Synonyms:</b>               | INK4C; p18; p18-INK4C   |
| <b>Note:</b>                   | p18 INK Antibody detects endogenous levels of p18 INK   |
| <b>Protein Families:</b>       | Druggable Genome  |
| <b>Protein Pathways:</b>       | Cell cycle  |



[View online »](#)

## Product images:



Western blot analysis on COS7 cell lysate using p18 INK Antibody