

## Product datasheet for **TA347700**

### **GUCY1B1 Rabbit Polyclonal Antibody**

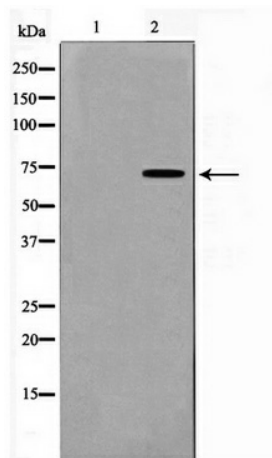
#### **Product data:**

<b>Product Type:</b>	Primary Antibodies
<b>Applications:</b>	WB
<b>Recommended Dilution:</b>	WB: 1:500-1:2000
<b>Reactivity:</b>	Human, Mouse, Rat
<b>Host:</b>	Rabbit
<b>Isotype:</b>	IgG
<b>Clonality:</b>	Polyclonal
<b>Immunogen:</b>	The immunogen for anti-GCYB1 Antibody: A synthesized peptide derived from human GCYB1
<b>Formulation:</b>	Rabbit IgG in phosphate buffered saline , pH 7.4, 150mM NaCl, 0.02% sodium azide and 50% glycerol. Store at -20?. Stable for 12 months from date of receipt
<b>Concentration:</b>	lot specific
<b>Purification:</b>	Immunogen affinity purified
<b>Conjugation:</b>	Unconjugated
<b>Storage:</b>	Store at -20°C as received.
<b>Stability:</b>	Stable for 12 months from date of receipt.
<b>Predicted Protein Size:</b>	70 kDa
<b>Gene Name:</b>	guanylate cyclase 1, soluble, beta 3
<b>Database Link:</b>	<a href="#">NP_000848</a> <a href="#">Entrez Gene 25202 Rat</a> <a href="#">Entrez Gene 54195 Mouse</a> <a href="#">Entrez Gene 2983 Human</a> <a href="#">Q02153</a>
<b>Background:</b>	GUCY1B3 Belongs to the adenylyl cyclase class-4/guanylyl cyclase family. Heterodimer of an alpha and a beta chain. 2 isoforms of the human protein are produced by alternative splicing.
<b>Synonyms:</b>	GC-S-beta-1; GC-SB3; GUC1B3; GUCB3; GUCSB3; GUCY1B1
<b>Note:</b>	GUCYB1 Antibody detects endogenous levels of GCYB1
<b>Protein Families:</b>	Druggable Genome
<b>Protein Pathways:</b>	Gap junction, Long-term depression, Purine metabolism, Vascular smooth muscle contraction



[View online »](#)

## Product images:



Western blot analysis on HuvEc cell lysate using GUCY1B1 Antibody