

Product datasheet for **TA347699**

Hsp105 (HSPH1) Rabbit Polyclonal Antibody

Product data:

Product Type:	Primary Antibodies
Applications:	WB
Recommended Dilution:	WB: 1:500-1:2000
Reactivity:	Human, Mouse
Host:	Rabbit
Isotype:	IgG
Clonality:	Polyclonal
Immunogen:	The immunogen for anti-HSP105 Antibody: A synthesized peptide derived from human HSP105
Formulation:	Rabbit IgG in phosphate buffered saline , pH 7.4, 150mM NaCl, 0.02% sodium azide and 50% glycerol. Store at -20?. Stable for 12 months from date of receipt
Concentration:	lot specific
Purification:	Immunogen affinity purified
Conjugation:	Unconjugated
Storage:	Store at -20°C as received.
Stability:	Stable for 12 months from date of receipt.
Predicted Protein Size:	100 kDa
Gene Name:	heat shock protein family H (Hsp110) member 1
Database Link:	NP_006635 Entrez Gene 15505 Mouse Entrez Gene 10808 Human Q92598
Background:	HSP105 a molecular chaperone of the heat shock protein 70 family. Has ATPase activity. Expressed at especially high levels in mammalian brain and has been shown to suppress apoptosis in neuronal cells and to prevent the aggregation of proteins following heat shock. Known to interact with a variety of proteins including alpha-tubulin and the androgen receptor.
Synonyms:	HSP105; HSP105A; HSP105B; NY-CO-25

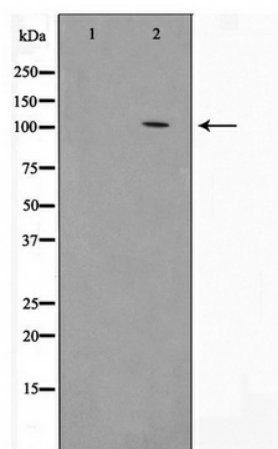


[View online »](#)

Note: HSP105 Antibody detects endogenous levels of HSP105

Protein Families: Stem cell - Pluripotency

Product images:



Western blot analysis on HeLa cell lysate using HSP105 Antibody