

## Product datasheet for **TA347698**

### PFKFB1 Rabbit Polyclonal Antibody

#### Product data:

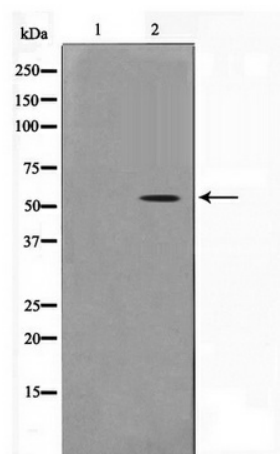
Product Type:	Primary Antibodies
Applications:	WB
Recommended Dilution:	WB: 1:500-1:2000
Reactivity:	Human, Mouse, Rat
Host:	Rabbit
Isotype:	IgG
Clonality:	Polyclonal
Immunogen:	The immunogen for anti-PFKFB1/4 Antibody: A synthesized peptide derived from human PFKFB1/4
Formulation:	Rabbit IgG in phosphate buffered saline , pH 7.4, 150mM NaCl, 0.02% sodium azide and 50% glycerol. Store at -20?. Stable for 12 months from date of receipt
Concentration:	lot specific
Purification:	Immunogen affinity purified
Conjugation:	Unconjugated
Storage:	Store at -20°C as received.
Stability:	Stable for 12 months from date of receipt.
Predicted Protein Size:	54 kDa
Gene Name:	6-phosphofructo-2-kinase/fructose-2,6-biphosphatase 1
Database Link:	<a href="#">NP_002616</a> <a href="#">Entrez Gene 18639 Mouse</a> <a href="#">Entrez Gene 24638 Rat</a> <a href="#">Entrez Gene 5207 Human</a> <a href="#">P16118</a>
Background:	PFKFB1 Synthesis and degradation of fructose 2,6-bisphosphate. Homodimer. Liver. Phosphorylation results in inhibition of the kinase activity. Note: This description may include information from UniProtKB.
Synonyms:	F6PK; HL2K; PFRX
Note:	PFKFB1/4 Antibody detects endogenous levels of PFKFB1/4
Protein Families:	Druggable Genome



[View online »](#)

Protein Pathways: Fructose and mannose metabolism

**Product images:**



Western blot analysis on HeLa cell lysate using PFKFB1/4 Antibody