

Product datasheet for **TA347695**

CDK11A Rabbit Polyclonal Antibody

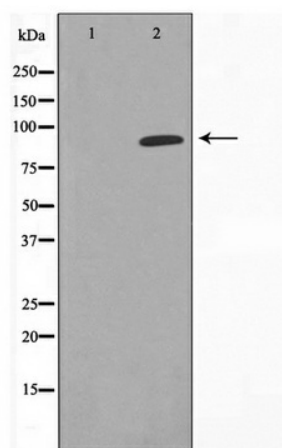
Product data:

Product Type:	Primary Antibodies
Applications:	WB
Recommended Dilution:	WB: 1:500-1:2000
Reactivity:	Human
Host:	Rabbit
Isotype:	IgG
Clonality:	Polyclonal
Immunogen:	The immunogen for anti-CDK11 Antibody: A synthesized peptide derived from human CDK11
Formulation:	Rabbit IgG in phosphate buffered saline , pH 7.4, 150mM NaCl, 0.02% sodium azide and 50% glycerol. Store at -20?. Stable for 12 months from date of receipt
Concentration:	lot specific
Purification:	Immunogen affinity purified
Conjugation:	Unconjugated
Storage:	Store at -20°C as received.
Stability:	Stable for 12 months from date of receipt.
Predicted Protein Size:	90 kDa
Gene Name:	cyclin-dependent kinase 11A
Database Link:	NP_076916 Entrez Gene 728642 Human Q9UQ88
Background:	CDK11 Belongs to the protein kinase superfamily. CMGC Ser/Thr protein kinase family. CDC2/CDKX subfamily. 2 isoforms of the human protein are produced by alternative splicing.
Synonyms:	CDC2L2; CDC2L3; CDK11-p46; CDK11-p58; CDK11-p110; p58GTA; PITSLRE
Note:	CDK11 Antibody detects endogenous levels of CDK11
Protein Families:	Druggable Genome



[View online »](#)

Product images:



Western blot analysis on COLO cell lysate using
CDK11 Antibody