

## Product datasheet for **TA347694**

### DYRK1B Rabbit Polyclonal Antibody

#### Product data:

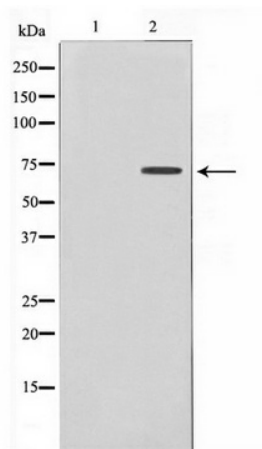
|                         |  |
|-------------------------|--|
| Product Type:           | Primary Antibodies   |
| Applications:           | WB   |
| Recommended Dilution:   | WB: 1:500-1:2000   |
| Reactivity:             | Human, Mouse   |
| Host:                   | Rabbit   |
| Isotype:                | IgG  |
| Clonality:              | Polyclonal   |
| Immunogen:              | The immunogen for anti-DYR1B Antibody: A synthesized peptide derived from human DYR1B  |
| Formulation:            | Rabbit IgG in phosphate buffered saline , pH 7.4, 150mM NaCl, 0.02% sodium azide and 50% glycerol. Store at -20?. Stable for 12 months from date of receipt  |
| Concentration:          | lot specific   |
| Purification:           | Immunogen affinity purified  |
| Conjugation:            | Unconjugated   |
| Storage:                | Store at -20°C as received.  |
| Stability:              | Stable for 12 months from date of receipt.   |
| Predicted Protein Size: | 70 kDa   |
| Gene Name:              | dual specificity tyrosine phosphorylation regulated kinase 1B  |
| Database Link:          | <a href="#">NP_004705</a><br><a href="#">Entrez Gene 13549 Mouse</a> <a href="#">Entrez Gene 9149 Human</a><br><a href="#">Q9Y463</a>  |
| Background:             | DYRK1B is a member of the DYRK family of protein kinases. DYRK1B contains a bipartite nuclear localization signal and is found mainly in muscle and testis. The protein is proposed to be involved in the regulation of nuclear functions. Three isoforms of DYRK1B have been identified differing in the presence of two alternatively spliced exons within the catalytic domain. |
| Synonyms:               | AOMS3; MIRK  |
| Note:                   | DYR1B Antibody detects endogenous levels of DYR1B  |



[View online »](#)

Protein Families: Druggable Genome, Protein Kinase, Transcription Factors

**Product images:**



Western blot analysis on Jurkat cell lysate using  
DYRK1B Antibody