

Product datasheet for **TA347692**

ELOVL4 Rabbit Polyclonal Antibody

Product data:

Product Type:	Primary Antibodies
Applications:	WB
Recommended Dilution:	WB: 1:500-1:2000
Reactivity:	Human, Mouse
Host:	Rabbit
Isotype:	IgG
Clonality:	Polyclonal
Immunogen:	The immunogen for anti-ELOVL4 Antibody: A synthesized peptide derived from human ELOVL4
Formulation:	Rabbit IgG in phosphate buffered saline , pH 7.4, 150mM NaCl, 0.02% sodium azide and 50% glycerol. Store at -20?. Stable for 12 months from date of receipt
Concentration:	lot specific
Purification:	Immunogen affinity purified
Conjugation:	Unconjugated
Storage:	Store at -20°C as received.
Stability:	Stable for 12 months from date of receipt.
Predicted Protein Size:	37 kDa
Gene Name:	ELOVL fatty acid elongase 4
Database Link:	NP_073563 Entrez Gene 83603 Mouse Entrez Gene 6785 Human Q9GZR5
Background:	ELOVL4 Involved in the biosynthesis of very long chain fatty acids. Seems to represent a photoreceptor-specific component of the fatty acid elongation system residing on the endoplasmic reticulum. May be implicated in docosahexaenoic acid (DHA) biosynthesis, which requires dietary consumption of the essential alpha-linolenic acid and a subsequent series of three elongation steps.
Synonyms:	ADMD; CT118; ISQMR; SCA34; STGD2; STGD3

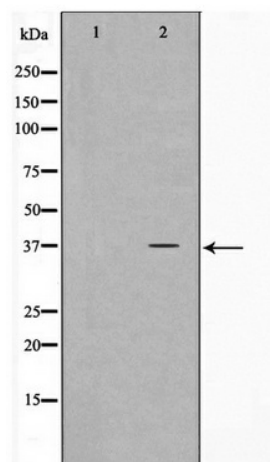


[View online »](#)

Note: ELOVL4 Antibody detects endogenous levels of ELOVL4

Protein Families: Transmembrane

Product images:



Western blot analysis on HeLa cell lysate using ELOVL4 Antibody