

Product datasheet for **TA347690**

COX11 Rabbit Polyclonal Antibody

Product data:

Product Type:	Primary Antibodies
Applications:	WB
Recommended Dilution:	WB: 1:500-1:2000
Reactivity:	Human, Mouse
Host:	Rabbit
Isotype:	IgG
Clonality:	Polyclonal
Immunogen:	The immunogen for anti-COX11 Antibody: A synthesized peptide derived from human COX11
Formulation:	Rabbit IgG in phosphate buffered saline , pH 7.4, 150mM NaCl, 0.02% sodium azide and 50% glycerol. Store at -20?. Stable for 12 months from date of receipt
Concentration:	lot specific
Purification:	Immunogen affinity purified
Conjugation:	Unconjugated
Storage:	Store at -20°C as received.
Stability:	Stable for 12 months from date of receipt.
Predicted Protein Size:	31 kDa
Gene Name:	COX11 cytochrome c oxidase copper chaperone
Database Link:	NP_004366 Entrez Gene 69802 Mouse Entrez Gene 1353 Human Q9Y6N1



[View online »](#)

Background:

Cytochrome c oxidase (COX), the terminal component of the mitochondrial respiratory chain, catalyzes the electron transfer from reduced cytochrome c to oxygen. This component is a heteromeric complex consisting of 3 catalytic subunits encoded by mitochondrial genes and multiple structural subunits encoded by nuclear genes. The mitochondrially-encoded subunits function in electron transfer, and the nuclear-encoded subunits may function in the regulation and assembly of the complex. This nuclear gene encodes a protein which is not a structural subunit, but may be a heme A biosynthetic enzyme involved in COX formation, according to the yeast mutant studies. However, the studies in *Rhodobacter sphaeroides* suggest that this gene is not required for heme A biosynthesis, but required for stable formation of the Cu(B) and magnesium centers of COX. This human protein is predicted to contain a transmembrane domain localized in the mitochondrial inner membrane. A pseudogene COX11P has been found on chromosome 6.

Synonyms:

COX11P

Note:

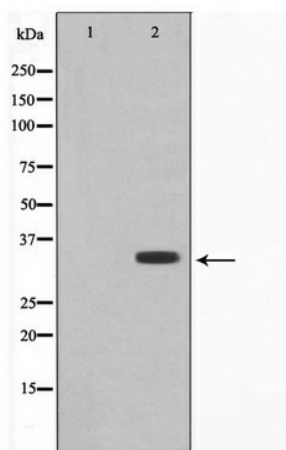
COX11 Antibody detects endogenous levels of COX11

Protein Families:

Transmembrane

Protein Pathways:

Metabolic pathways, Oxidative phosphorylation

Product images:

Western blot analysis on RAW264.7 cell lysate using COX11 Antibody