

Product datasheet for **TA347689**

DOK3 Rabbit Polyclonal Antibody

Product data:

Product Type:	Primary Antibodies
Applications:	WB
Recommended Dilution:	WB: 1:500-1:2000
Reactivity:	Human, Mouse
Host:	Rabbit
Isotype:	IgG
Clonality:	Polyclonal
Immunogen:	The immunogen for anti-DOK3 Antibody: A synthesized peptide derived from human DOK3
Formulation:	Rabbit IgG in phosphate buffered saline , pH 7.4, 150mM NaCl, 0.02% sodium azide and 50% glycerol. Store at -20?. Stable for 12 months from date of receipt
Concentration:	lot specific
Purification:	Immunogen affinity purified
Conjugation:	Unconjugated
Storage:	Store at -20°C as received.
Stability:	Stable for 12 months from date of receipt.
Predicted Protein Size:	58 kDa
Gene Name:	docking protein 3
Database Link:	NP_079148 Entrez Gene 27261 Mouse Entrez Gene 79930 Human Q7L591
Background:	Docking proteins interact with receptor tyrosine kinases and mediate particular biological responses. DOK3 is a negative regulator of JNK signaling in B-cells through interaction with INPP5D/SHIP. May modulate Abl function. On tyrosine phosphorylation, interacts with CSK and INPP5D/SHIP via their SH2 domains. Both Tyr-381 and Tyr-398 are required for interaction with INPP5D. Only Tyr-381 is required for interaction with CSK. Binds ABL through the PTB domain and in a kinase-dependent manner. Does not interact with RasGAP. 4 isoforms of the human protein are produced by alternative splicing.
Synonyms:	DOKL

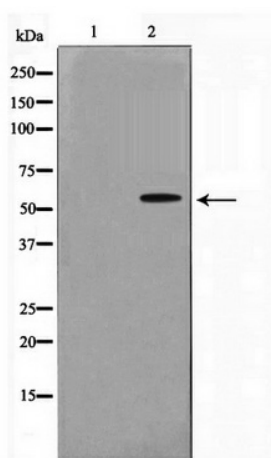


[View online »](#)

Note: DOK3 Antibody detects endogenous levels of DOK3

Protein Families: Druggable Genome

Product images:



Western blot analysis on HepG2 cell lysate using DOK3 Antibody