

Product datasheet for **TA347687**

MLK4 (MAP3K21) Rabbit Polyclonal Antibody

Product data:

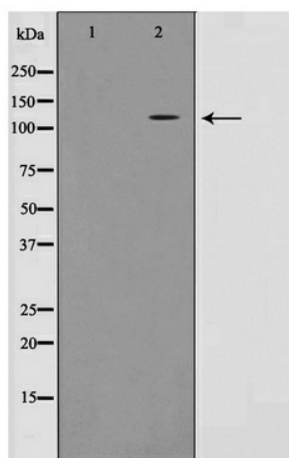
Product Type:	Primary Antibodies
Applications:	WB
Recommended Dilution:	WB: 1:500-1:2000
Reactivity:	Human
Host:	Rabbit
Isotype:	IgG
Clonality:	Polyclonal
Immunogen:	The immunogen for anti-MLK4 Antibody: A synthesized peptide derived from human MAP3KL4
Formulation:	Rabbit IgG in phosphate buffered saline , pH 7.4, 150mM NaCl, 0.02% sodium azide and 50% glycerol. Store at -20?. Stable for 12 months from date of receipt
Concentration:	lot specific
Purification:	Immunogen affinity purified
Conjugation:	Unconjugated
Storage:	Store at -20°C as received.
Stability:	Stable for 12 months from date of receipt.
Predicted Protein Size:	110 kDa
Gene Name:	mitogen-activated protein kinase kinase kinase 21
Database Link:	NP_115811 Entrez Gene 84451 Human Q5TCX8
Background:	MLK4 Activates the JUN N-terminal pathway. Belongs to the protein kinase superfamily. STE Ser/Thr protein kinase family. MAP kinase kinase kinase subfamily. Homodimer. 3 isoforms of the human protein are produced by alternative splicing. Note: This description may include information from UniProtKB.
Synonyms:	dJ862P8.3; MLK4
Note:	MAP3KL4 Antibody detects endogenous levels of MAP3KL4



[View online »](#)

Protein Families: Druggable Genome, Protein Kinase

Product images:



Western blot analysis on HT29 cell lysate using MLK4 Antibody