

Product datasheet for **TA347684**

Gastrin (GAST) Rabbit Polyclonal Antibody

Product data:

Product Type:	Primary Antibodies
Applications:	WB
Recommended Dilution:	WB: 1:500-1:2000
Reactivity:	Human, Mouse, Rat
Host:	Rabbit
Isotype:	IgG
Clonality:	Polyclonal
Immunogen:	The immunogen for anti-Gastrin Antibody: A synthesized peptide derived from human Gastrin
Formulation:	Rabbit IgG in phosphate buffered saline , pH 7.4, 150mM NaCl, 0.02% sodium azide and 50% glycerol. Store at -20?. Stable for 12 months from date of receipt
Concentration:	lot specific
Purification:	Immunogen affinity purified
Conjugation:	Unconjugated
Storage:	Store at -20°C as received.
Stability:	Stable for 12 months from date of receipt.
Predicted Protein Size:	12 kDa
Gene Name:	gastrin
Database Link:	NP_000796 Entrez Gene 14459 Mouse Entrez Gene 25320 Rat Entrez Gene 2520 Human P01350
Background:	gastrin Gastrin stimulates the stomach mucosa to produce and secrete hydrochloric acid and the pancreas to secrete its digestive enzymes. It also stimulates smooth muscle contraction and increases blood circulation and water secretion in the stomach and intestine. Belongs to the gastrin/cholecystokinin family. Note: This description may include information from UniProtKB.
Synonyms:	GAS

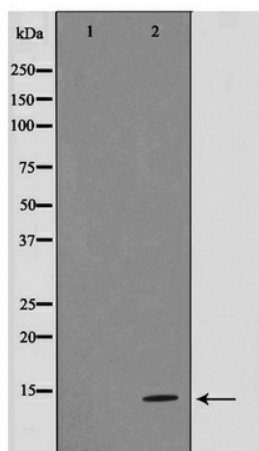


[View online »](#)

Note: Gastrin Antibody detects endogenous levels of Gastrin

Protein Families: Druggable Genome, Secreted Protein

Product images:



Western blot analysis on NIH-3T3 cell lysate using Gastrin Antibody