

Product datasheet for **TA347683**

TUSC3 Rabbit Polyclonal Antibody

Product data:

Product Type:	Primary Antibodies
Applications:	WB
Recommended Dilution:	WB: 1:500-1:2000
Reactivity:	Human, Mouse, Rat
Host:	Rabbit
Isotype:	IgG
Clonality:	Polyclonal
Immunogen:	The immunogen for anti-TUSC3 Antibody: A synthesized peptide derived from human TUSC3
Formulation:	Rabbit IgG in phosphate buffered saline , pH 7.4, 150mM NaCl, 0.02% sodium azide and 50% glycerol. Store at -20?. Stable for 12 months from date of receipt
Concentration:	lot specific
Purification:	Immunogen affinity purified
Conjugation:	Unconjugated
Storage:	Store at -20°C as received.
Stability:	Stable for 12 months from date of receipt.
Predicted Protein Size:	39 kDa
Gene Name:	tumor suppressor candidate 3
Database Link:	NP_839952 Entrez Gene 80286 MouseEntrez Gene 290783 RatEntrez Gene 7991 Human Q13454
Background:	This gene is a candidate tumor suppressor gene. It is located within a homozygously deleted region of a metastatic prostate cancer. The gene is expressed in most nonlymphoid human tissues including prostate, lung, liver, and colon. Expression was also detected in many epithelial tumor cell lines. Two transcript variants encoding distinct isoforms have been identified for this gene
Synonyms:	D8S1992; M33; MRT7; MRT22; N33; OST3A
Note:	TUSC3 Antibody detects endogenous levels of TUSC3

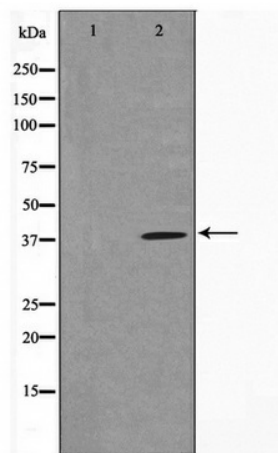


[View online »](#)

Protein Families: Druggable Genome, Transmembrane

Protein Pathways: Metabolic pathways, N-Glycan biosynthesis

Product images:



Western blot analysis on COLO205 cell lysate using TUSC3 Antibody