

## Product datasheet for **TA347678**

### Collagen V (COL5A1) Rabbit Polyclonal Antibody

#### Product data:

Product Type:	Primary Antibodies
Applications:	WB
Recommended Dilution:	WB: 1:500-1:2000
Reactivity:	Human
Host:	Rabbit
Isotype:	IgG
Clonality:	Polyclonal
Immunogen:	The immunogen for anti-Collagen Valpha 1 Antibody: A synthesized peptide derived from human Collagen Valpha 1
Formulation:	Rabbit IgG in phosphate buffered saline , pH 7.4, 150mM NaCl, 0.02% sodium azide and 50% glycerol. Store at -20?. Stable for 12 months from date of receipt
Concentration:	lot specific
Purification:	Immunogen affinity purified
Conjugation:	Unconjugated
Storage:	Store at -20°C as received.
Stability:	Stable for 12 months from date of receipt.
Predicted Protein Size:	200 kDa
Gene Name:	collagen type V alpha 1
Database Link:	<a href="#">NP_000084</a> <a href="#">Entrez Gene 1289 Human</a> <a href="#">P20908</a>
Background:	This gene encodes an alpha chain for one of the low abundance fibrillar collagens. Fibrillar collagen molecules are trimers that can be composed of one or more types of alpha chains. Type V collagen is found in tissues containing type I collagen and appears to regulate the assembly of heterotypic fibers composed of both type I and type V collagen. This gene product is closely related to type XI collagen and it is possible that the collagen chains of types V and XI constitute a single collagen type with tissue-specific chain combinations. Mutations in this gene are associated with Ehlers-Danlos syndrome, types I and II.



[View online »](#)

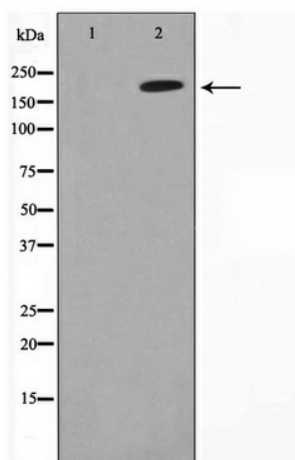
**Synonyms:** COL5A1

**Note:** Collagen Valpha 1 Antibody detects endogenous levels of Collagen Valpha 1

**Protein Families:** Druggable Genome

**Protein Pathways:** ECM-receptor interaction, Focal adhesion

**Product images:**



Western blot analysis on HeLa cell lysate using Collagen Valpha 1 Antibody