

## Product datasheet for **TA347677**

### **MAGE 1 (MAGEA1) Rabbit Polyclonal Antibody**

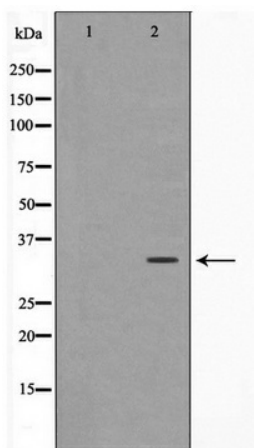
#### **Product data:**

<b>Product Type:</b>	Primary Antibodies
<b>Applications:</b>	WB
<b>Recommended Dilution:</b>	WB: 1:500-1:2000
<b>Reactivity:</b>	Human
<b>Host:</b>	Rabbit
<b>Isotype:</b>	IgG
<b>Clonality:</b>	Polyclonal
<b>Immunogen:</b>	The immunogen for anti-MAGE-1 Antibody: A synthesized peptide derived from human MAGE-1
<b>Formulation:</b>	Rabbit IgG in phosphate buffered saline , pH 7.4, 150mM NaCl, 0.02% sodium azide and 50% glycerol. Store at -20?. Stable for 12 months from date of receipt
<b>Concentration:</b>	lot specific
<b>Purification:</b>	Immunogen affinity purified
<b>Conjugation:</b>	Unconjugated
<b>Storage:</b>	Store at -20°C as received.
<b>Stability:</b>	Stable for 12 months from date of receipt.
<b>Predicted Protein Size:</b>	34 kDa
<b>Gene Name:</b>	MAGE family member A1
<b>Database Link:</b>	<a href="#">NP_004979</a> <a href="#">Entrez Gene 4100 Human</a> <a href="#">P43355</a>
<b>Background:</b>	MAGE-A1 a tumor antigen expressed in a variety of tumor cells and in the testis. May play a role in embryonal development and tumor transformation or aspects of tumor progression. Antigen recognized on a melanoma by autologous cytolytic T-lymphocytes. Note: This description may include information from UniProtKB.
<b>Synonyms:</b>	CT1.1; MAGE1
<b>Note:</b>	MAGE-1 Antibody detects endogenous levels of MAGE-1



[View online »](#)

## Product images:



Western blot analysis on HepG2 cell lysate using MAGE-1 Antibody