

## Product datasheet for **TA347676**

### SFXN4 Rabbit Polyclonal Antibody

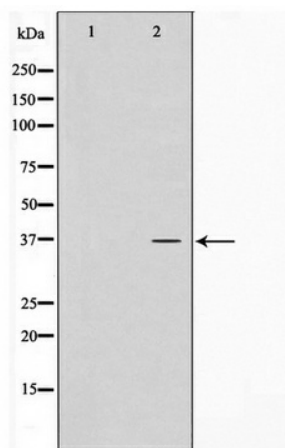
#### Product data:

Product Type:	Primary Antibodies
Applications:	WB
Recommended Dilution:	WB: 1:500-1:2000
Reactivity:	Human
Host:	Rabbit
Isotype:	IgG
Clonality:	Polyclonal
Immunogen:	The immunogen for anti-SFXN4 Antibody: A synthesized peptide derived from human SFXN4
Formulation:	Rabbit IgG in phosphate buffered saline , pH 7.4, 150mM NaCl, 0.02% sodium azide and 50% glycerol. Store at -20?. Stable for 12 months from date of receipt
Concentration:	lot specific
Purification:	Immunogen affinity purified
Conjugation:	Unconjugated
Storage:	Store at -20°C as received.
Stability:	Stable for 12 months from date of receipt.
Predicted Protein Size:	37 kDa
Gene Name:	sideroflexin 4
Database Link:	<a href="#">NP_998814</a> <a href="#">Entrez Gene 119559 Human</a> <a href="#">Q6P4A7</a>
Background:	Sfxn4 Potential iron transporter. Belongs to the sideroflexin family. 3 isoforms of the human protein are produced by alternative splicing. Note: This description may include information from UniProtKB.
Synonyms:	BCRM1; COXPD18
Note:	SFXN4 Antibody detects endogenous levels of SFXN4
Protein Families:	Transmembrane



[View online »](#)

## Product images:



Western blot analysis on HuvEc cell lysate using SFXN4 Antibody