

## Product datasheet for **TA347675**

### Dystrophia myotonica protein kinase (DMPK) Rabbit Polyclonal Antibody

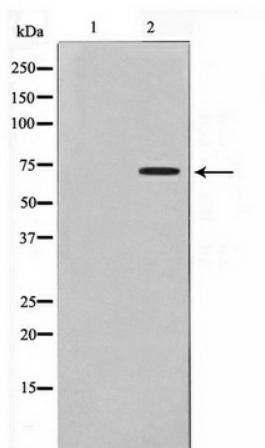
#### Product data:

Product Type:	Primary Antibodies
Applications:	WB
Recommended Dilution:	WB: 1:500-1:2000
Reactivity:	Human
Host:	Rabbit
Isotype:	IgG
Clonality:	Polyclonal
Immunogen:	The immunogen for anti-DMPK Antibody: A synthesized peptide derived from human DMPK
Formulation:	Rabbit IgG in phosphate buffered saline , pH 7.4, 150mM NaCl, 0.02% sodium azide and 50% glycerol. Store at -20?. Stable for 12 months from date of receipt
Concentration:	lot specific
Purification:	Immunogen affinity purified
Conjugation:	Unconjugated
Storage:	Store at -20°C as received.
Stability:	Stable for 12 months from date of receipt.
Predicted Protein Size:	70 kDa
Gene Name:	dystrophia myotonica protein kinase
Database Link:	<a href="#">NP_004400</a> <a href="#">Entrez Gene 1760 Human</a> <a href="#">Q09013</a>
Background:	DMPK1 Critical to the modulation of cardiac contractility and to the maintenance of proper cardiac conduction activity. Phosphorylates phospholamban. Belongs to the protein kinase superfamily. AGC Ser/Thr protein kinase family. DMPK subfamily. Homodimer. 13 isoforms of the human protein are produced by alternative splicing.
Synonyms:	DM; DM1; DM1PK; DMK; MDPK; MT-PK
Note:	DMPK Antibody detects endogenous levels of DMPK
Protein Families:	Druggable Genome, Protein Kinase



[View online »](#)

## Product images:



Western blot analysis on Jurkat cell lysate using DMPK Antibody