

Product datasheet for **TA347672**

LYK5 (STRADA) Rabbit Polyclonal Antibody

Product data:

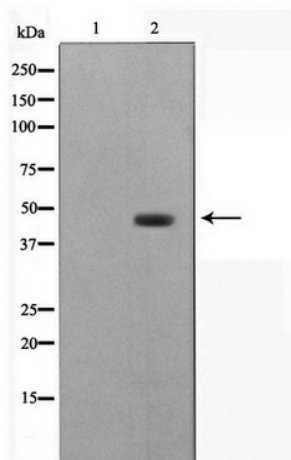
Product Type:	Primary Antibodies
Applications:	WB
Recommended Dilution:	WB: 1:500-1:2000
Reactivity:	Human, Mouse
Host:	Rabbit
Isotype:	IgG
Clonality:	Polyclonal
Immunogen:	The immunogen for anti-STRAD Antibody: A synthesized peptide derived from human STRAD
Formulation:	Rabbit IgG in phosphate buffered saline , pH 7.4, 150mM NaCl, 0.02% sodium azide and 50% glycerol. Store at -20?. Stable for 12 months from date of receipt
Concentration:	lot specific
Purification:	Immunogen affinity purified
Conjugation:	Unconjugated
Storage:	Store at -20°C as received.
Stability:	Stable for 12 months from date of receipt.
Predicted Protein Size:	46 kDa
Gene Name:	STE20-related kinase adaptor alpha
Database Link:	NP_001003787 Entrez Gene 72149 Mouse Entrez Gene 92335 Human Q7RTN6
Background:	STRAD a pseudokinase which, in complex with CAB39, binds to and activates LKB1. Relocates LKB1 from the nucleus to the cytoplasm. Plays an essential role in LKB1-mediated G1 cell cycle arrest. 3 isoforms of the human protein are produced by alternative splicing. Note: This description may include information from UniProtKB.
Synonyms:	LYK5; NY-BR-96; PMSE; Stlk; STRAD
Note:	STRAD Antibody detects endogenous levels of STRAD
Protein Families:	Druggable Genome, Protein Kinase



[View online »](#)

Protein Pathways: mTOR signaling pathway

Product images:



Western blot analysis on HepG2 cell lysate using STRAD Antibody