

## Product datasheet for **TA347671**

### MAST205 (MAST2) Rabbit Polyclonal Antibody

#### Product data:

|                         |                                                                                                                                                                                                                                                                                                                                                                                                                                                                                                 |
|-------------------------|-------------------------------------------------------------------------------------------------------------------------------------------------------------------------------------------------------------------------------------------------------------------------------------------------------------------------------------------------------------------------------------------------------------------------------------------------------------------------------------------------|
| Product Type:           | Primary Antibodies                                                                                                                                                                                                                                                                                                                                                                                                                                                                              |
| Applications:           | WB                                                                                                                                                                                                                                                                                                                                                                                                                                                                                              |
| Recommended Dilution:   | WB: 1:500-1:2000                                                                                                                                                                                                                                                                                                                                                                                                                                                                                |
| Reactivity:             | Human, Mouse                                                                                                                                                                                                                                                                                                                                                                                                                                                                                    |
| Host:                   | Rabbit                                                                                                                                                                                                                                                                                                                                                                                                                                                                                          |
| Isotype:                | IgG                                                                                                                                                                                                                                                                                                                                                                                                                                                                                             |
| Clonality:              | Polyclonal                                                                                                                                                                                                                                                                                                                                                                                                                                                                                      |
| Immunogen:              | The immunogen for anti-MAST2 Antibody: A synthesized peptide derived from human MAST2                                                                                                                                                                                                                                                                                                                                                                                                           |
| Formulation:            | Rabbit IgG in phosphate buffered saline , pH 7.4, 150mM NaCl, 0.02% sodium azide and 50% glycerol. Store at -20?. Stable for 12 months from date of receipt                                                                                                                                                                                                                                                                                                                                     |
| Concentration:          | lot specific                                                                                                                                                                                                                                                                                                                                                                                                                                                                                    |
| Purification:           | Immunogen affinity purified                                                                                                                                                                                                                                                                                                                                                                                                                                                                     |
| Conjugation:            | Unconjugated                                                                                                                                                                                                                                                                                                                                                                                                                                                                                    |
| Storage:                | Store at -20°C as received.                                                                                                                                                                                                                                                                                                                                                                                                                                                                     |
| Stability:              | Stable for 12 months from date of receipt.                                                                                                                                                                                                                                                                                                                                                                                                                                                      |
| Predicted Protein Size: | 196 kDa                                                                                                                                                                                                                                                                                                                                                                                                                                                                                         |
| Gene Name:              | microtubule associated serine/threonine kinase 2                                                                                                                                                                                                                                                                                                                                                                                                                                                |
| Database Link:          | <a href="#">NP_055927</a><br><a href="#">Entrez Gene 17776 Mouse</a> <a href="#">Entrez Gene 23139 Human</a><br><a href="#">Q6P0Q8</a>                                                                                                                                                                                                                                                                                                                                                          |
| Background:             | MAST2 appears to link the dystrophin/utrophin network with microtubule filaments via the syntrophins. Phosphorylation of DMD or UTRN may modulate their affinities for associated proteins. Functions in a multi-protein complex in spermatid maturation. Regulates lipopolysaccharide-induced IL-12 synthesis in macrophages by forming a complex with TRAF6, resulting in the inhibition of TRAF6 NF-kappaB activation. 2 isoforms of the human protein are produced by alternative splicing. |
| Synonyms:               | MAST205; MTSSK                                                                                                                                                                                                                                                                                                                                                                                                                                                                                  |

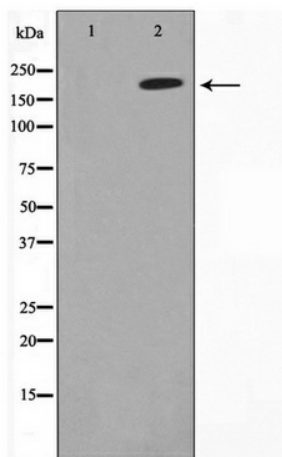


[View online »](#)

**Note:** MAST2 Antibody detects endogenous levels of MAST2

**Protein Families:** Druggable Genome, Protein Kinase

**Product images:**



Western blot analysis on Jurkat cell lysate using MAST2 Antibody