

Product datasheet for **TA347670**

TRIP13 Rabbit Polyclonal Antibody

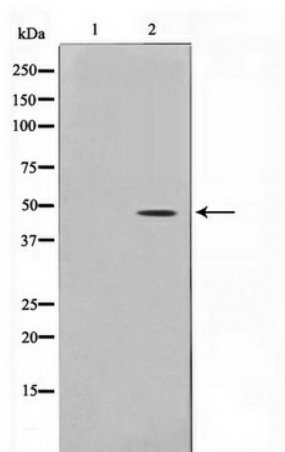
Product data:

Product Type:	Primary Antibodies
Applications:	WB
Recommended Dilution:	WB: 1:500-1:2000
Reactivity:	Human, Mouse, Rat
Host:	Rabbit
Isotype:	IgG
Clonality:	Polyclonal
Immunogen:	The immunogen for anti-TRIP13 Antibody: A synthesized peptide derived from human TRIP13
Formulation:	Rabbit IgG in phosphate buffered saline , pH 7.4, 150mM NaCl, 0.02% sodium azide and 50% glycerol. Store at -20?. Stable for 12 months from date of receipt
Concentration:	lot specific
Purification:	Immunogen affinity purified
Conjugation:	Unconjugated
Storage:	Store at -20°C as received.
Stability:	Stable for 12 months from date of receipt.
Predicted Protein Size:	48 kDa
Gene Name:	thyroid hormone receptor interactor 13
Database Link:	NP_004228 Entrez Gene 69716 MouseEntrez Gene 292206 RatEntrez Gene 9319 Human Q15645
Background:	Thyroid receptor interacting proteins (TRIPs) specifically interact with the ligand binding domain of the thyroid receptor (TR). TRIP13 does not require the presence of thyroid hormone for its interaction.
Synonyms:	16E1BP
Note:	TRIP13 Antibody detects endogenous levels of TRIP13
Protein Families:	Druggable Genome, Stem cell - Pluripotency, Transcription Factors



[View online »](#)

Product images:



Western blot analysis on LOVO cell lysate using TRIP13 Antibody