

Product datasheet for **TA347669**

GCKR Rabbit Polyclonal Antibody

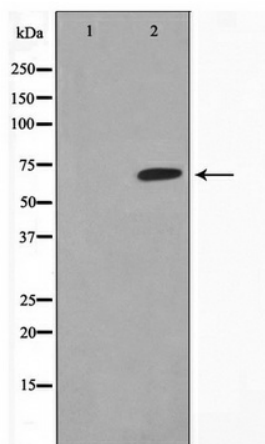
Product data:

Product Type:	Primary Antibodies
Applications:	WB
Recommended Dilution:	WB: 1:500-1:2000
Reactivity:	Human, Mouse, Rat
Host:	Rabbit
Isotype:	IgG
Clonality:	Polyclonal
Immunogen:	The immunogen for anti-GCKR Antibody: A synthesized peptide derived from human GCKR
Formulation:	Rabbit IgG in phosphate buffered saline , pH 7.4, 150mM NaCl, 0.02% sodium azide and 50% glycerol. Store at -20?. Stable for 12 months from date of receipt
Concentration:	lot specific
Purification:	Immunogen affinity purified
Conjugation:	Unconjugated
Storage:	Store at -20°C as received.
Stability:	Stable for 12 months from date of receipt.
Predicted Protein Size:	68 kDa
Gene Name:	glucokinase (hexokinase 4) regulator
Database Link:	NP_001477 Entrez Gene 25658 RatEntrez Gene 231103 MouseEntrez Gene 2646 Human Q14397
Background:	This gene encodes a protein belonging to the GCKR subfamily of the SIS (Sugar ISomerase) family of proteins. The gene product is a regulatory protein that inhibits glucokinase in liver and pancreatic islet cells by binding non-covalently to form an inactive complex with the enzyme. This gene is considered a susceptibility gene candidate for a form of maturity-onset diabetes of the young (MODY).
Synonyms:	FGQTL5; GKRP
Note:	GCKR Antibody detects endogenous levels of GCKR



[View online »](#)

Product images:



Western blot analysis on mouse heart cell lysate using GCKR Antibody