

Product datasheet for **TA347666**

PRDM12 Rabbit Polyclonal Antibody

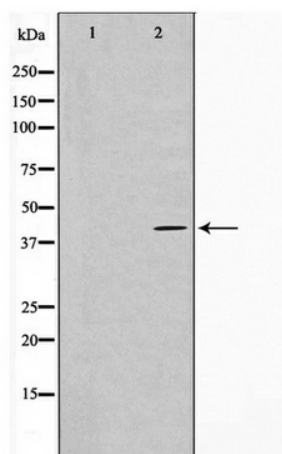
Product data:

Product Type:	Primary Antibodies
Applications:	WB
Recommended Dilution:	WB: 1:500-1:2000
Reactivity:	Human, Mouse
Host:	Rabbit
Isotype:	IgG
Clonality:	Polyclonal
Immunogen:	The immunogen for anti-PRDM12 Antibody: A synthesized peptide derived from human PRDM12
Formulation:	Rabbit IgG in phosphate buffered saline , pH 7.4, 150mM NaCl, 0.02% sodium azide and 50% glycerol. Store at -20?. Stable for 12 months from date of receipt
Concentration:	lot specific
Purification:	Immunogen affinity purified
Conjugation:	Unconjugated
Storage:	Store at -20°C as received.
Stability:	Stable for 12 months from date of receipt.
Predicted Protein Size:	40 kDa
Gene Name:	PR domain 12
Database Link:	NP_067632 Entrez Gene 381359 Mouse Entrez Gene 59335 Human Q9H4Q4
Background:	PRDM12 May be involved in transcriptional regulation. The SET domain is degenerated, suggesting that it has lost mehtyltransferase activity.
Synonyms:	HSAN8; PFM9
Note:	PRDM12 Antibody detects endogenous levels of PRDM12



[View online »](#)

Product images:



Western blot analysis on HuvEc cell lysate using PRDM12 Antibody