

Product datasheet for **TA347665**

MRC2 Rabbit Polyclonal Antibody

Product data:

Product Type:	Primary Antibodies
Applications:	WB
Recommended Dilution:	WB: 1:500-1:2000
Reactivity:	Human, Mouse, Rat
Host:	Rabbit
Isotype:	IgG
Clonality:	Polyclonal
Immunogen:	The immunogen for anti-MRC2 Antibody: A synthesized peptide derived from human MRC2
Formulation:	Rabbit IgG in phosphate buffered saline , pH 7.4, 150mM NaCl, 0.02% sodium azide and 50% glycerol. Store at -20?. Stable for 12 months from date of receipt
Concentration:	lot specific
Purification:	Immunogen affinity purified
Conjugation:	Unconjugated
Storage:	Store at -20°C as received.
Stability:	Stable for 12 months from date of receipt.
Predicted Protein Size:	167 kDa
Gene Name:	mannose receptor C type 2
Database Link:	NP_006030 Entrez Gene 17534 MouseEntrez Gene 498011 RatEntrez Gene 9902 Human Q9UBG0
Background:	MRC2 May play a role as endocytotic lectin receptor displaying calcium-dependent lectin activity. Internalizes glycosylated ligands from the extracellular space for release in an endosomal compartment via clathrin-mediated endocytosis. May be involved in plasminogen activation system controlling the extracellular level of PLAUR/PLAU, and thus may regulate protease activity at the cell surface. May contribute to cellular uptake, remodeling and degradation of extracellular collagen matrices. May play a role during cancer progression as well as in other chronic tissue destructive diseases acting on collagen turnover.
Synonyms:	CD280; CLEC13E; ENDO180; UPARAP

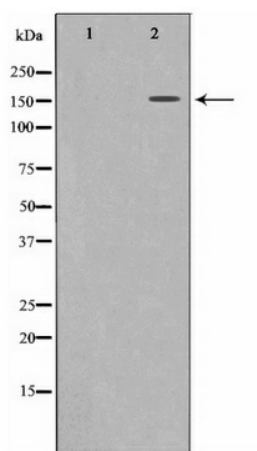


[View online »](#)

Note: MRC2 Antibody detects endogenous levels of MRC2

Protein Families: Druggable Genome, Transmembrane

Product images:



Western blot analysis on 293 cell lysate using MRC2 Antibody